

# Chess Strategy

Practice and training guide



Leonid Nikolaev

Kiev 2006

Author and original title:  
Леонид НИКОЛАЕВ  
ШАХМАТНАЯ СТРАТЕГИЯ  
практикум-тренажер  
Киев 2006

First translation and adaptation by Maurizio Camangi and Olga Strel-  
nikova

Revision by Maurizio Camangi

Cover : Anatolij Karpov and Robert J. Fischer

Graphic by Maurizio Camangi

Second edition December 2009

Third edition (English) December 2017

Translation rights © 2009-2017

No part of this book may be used or reproduced in any manner whatsoever without written permission from Maurizio Camangi (the publisher). This book and its PGN database can not be uploaded, attached or distributed by any channel whatsoever except the [original site](#), property of the publisher, without his written permission.

In the *mare magnum* of chess literature, a vast room is already taken up by a multitude of educational texts, practice and training guides, encyclopedias: most of them are focus on tactic and combinational motifs. At the same time, it is uncommon to find texts where not only the strategy principles are present, but also an adequate amount of examples for an autonomous workout.

This work is intended for expert chess player (class A and Master candidates) and wants somehow to fill that gap. Here are collected positions taken from “classical” Grand Master games of the past and also pieces of nice creativity from contemporary players, including games played by the author; the effectiveness of the work performed with these positions has been successfully proven during the pre-match training group lesson of the “Avangard” School. Puzzles are randomly mixed, because I have knowingly avoided any classification based on thematic principles which may give the student a hint. By contrast, the complexity is purely subjective: a strategic solution may be evident for one student, whilst for another of the same strength that solution may be considered obscure. Thanks to this book, just during the training process, most of the moves will likely become easy and obvious.

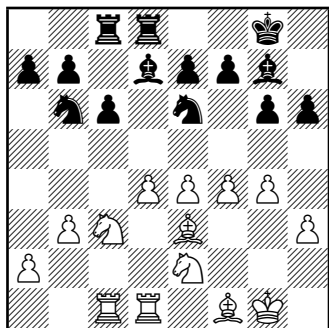
During the decision-making processes, these following rules simplify the discovery of the right continuation:

1. (Prophylaxis rule) First of all ask yourself: what is my opponent trying to do? Discovering hidden threats make it possible to drastically cut down the overall number of candidate moves.
2. (“Bad piece” rule) Choose a badly placed piece and try to move it into a better position.
3. (“Second weakness” rule) Whilst the attack against a vulnerable point of your opponent line-up might not immediately succeed, you are asked to find (or build up) a new target to attack on the opposing side.

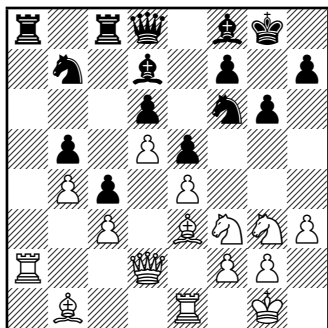
While you are solving a puzzle, I suggest not to spend more than 15–20 minutes; in general there are no sequences of forced moves nor long variations to calculate. Instead of searching for long variations, it is better to come up with an accurate analysis of the game hereinafter.

I hope this book will be useful as much for the students as for the instructors. I shall be grateful for all the advices and remarks that will be arriving.

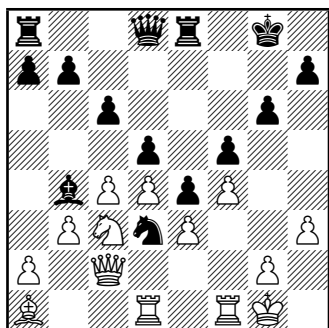
**Leonid Nikolaev, Master of Sport, first instructor of the  
“Avangard” School**



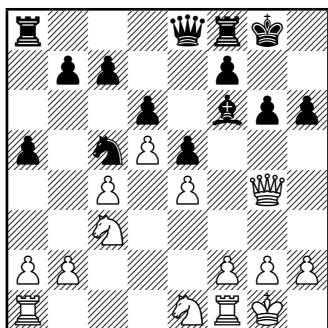
1: Black to move ■



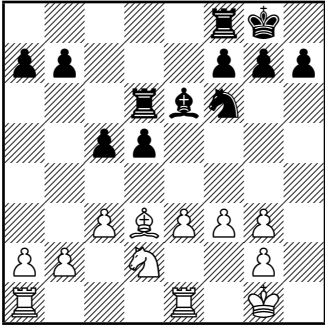
2: White to move □



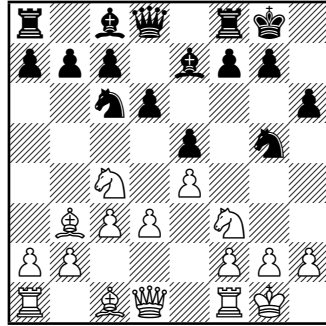
3: Black to move ■



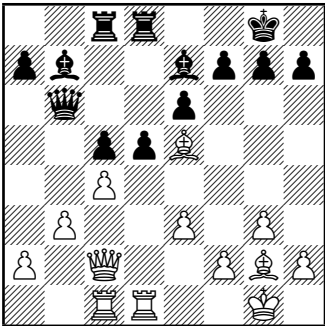
4: Black to move ■



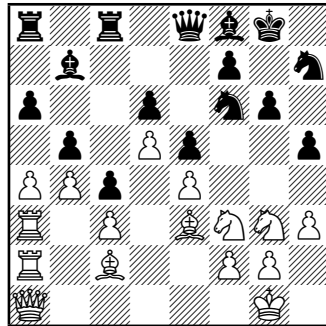
5: Black to move ■



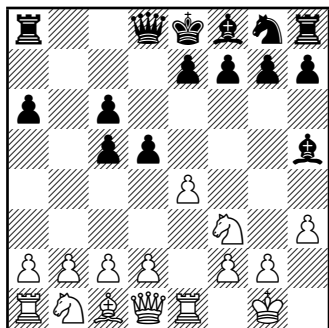
6: White to move □



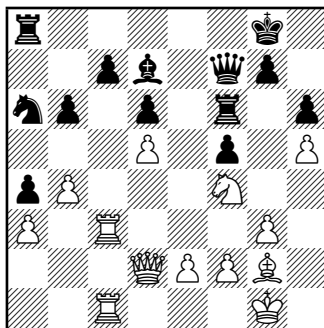
7: Black to move ■



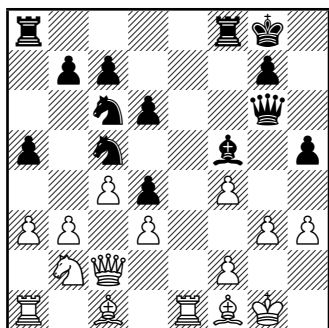
8: White to move □



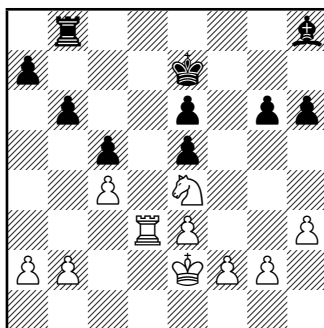
9: White to move □



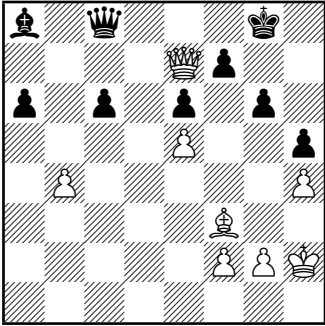
10: White to move □



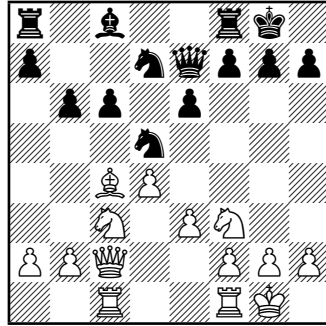
11: Black to move ■



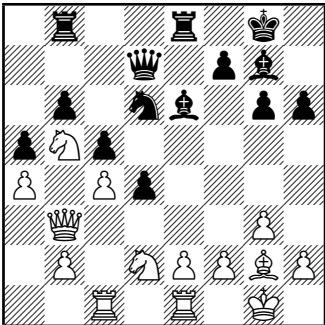
12: White to move □



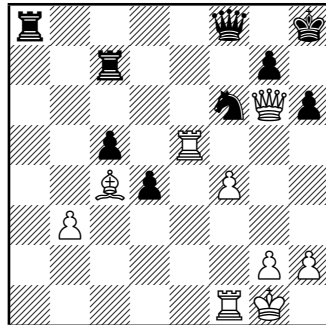
13: White to move □



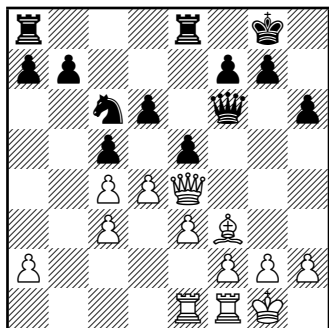
14: White to move □



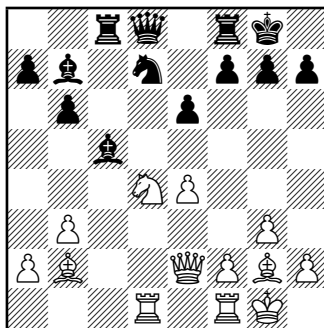
15: Black to move ■



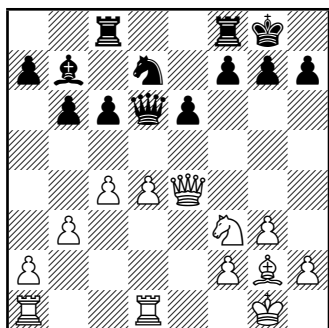
16: White to move □



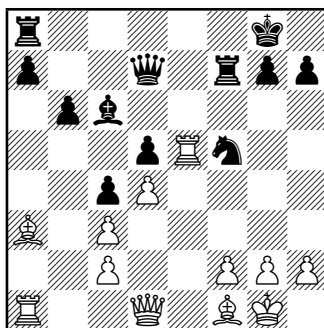
17: White to move □



18: White to move □

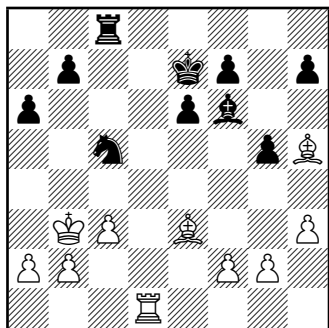


19: White to move □

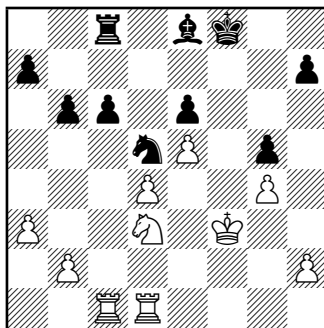


20: White to move □

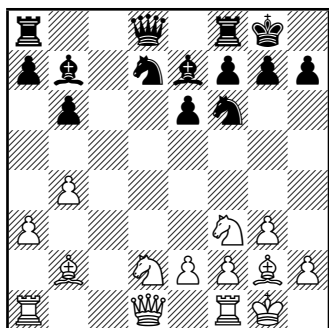




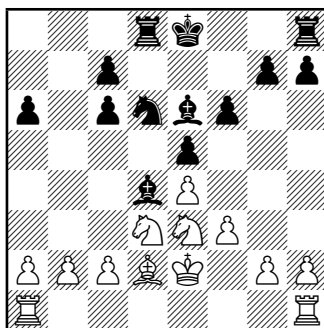
21: White to move □



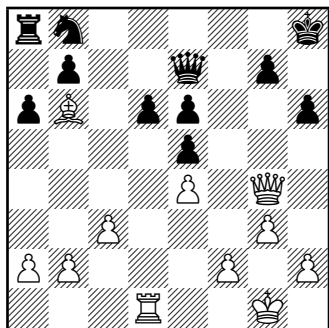
22: White to move □



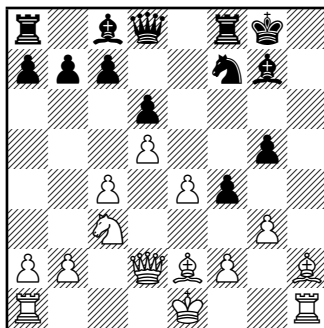
23: White to move □



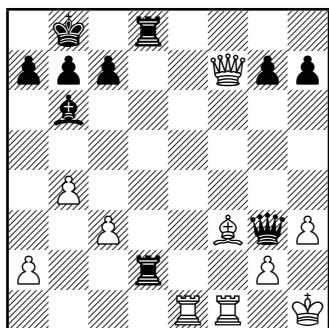
24: Black to move ■



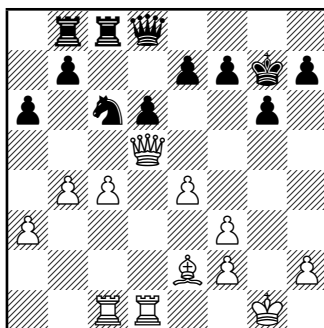
25: White to move □



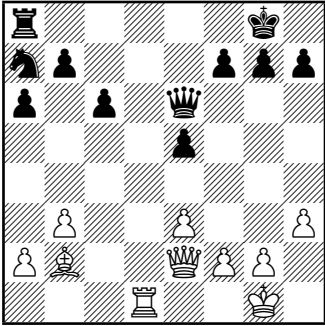
26: Black to move ■



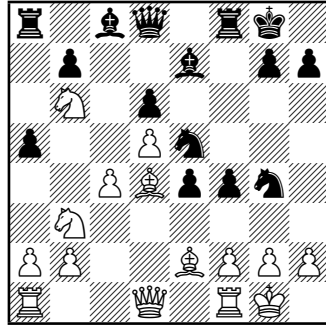
27: Black to move ■



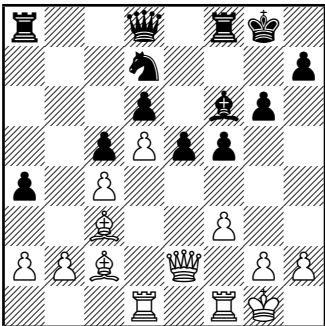
28: Black to move ■



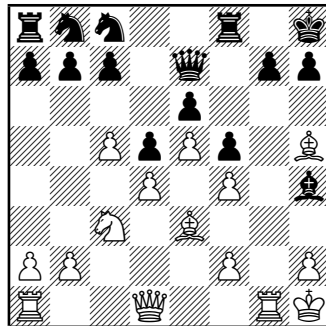
29: White to move □



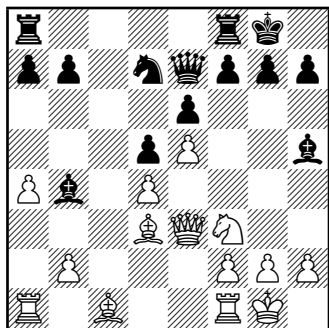
30: Black to move ■



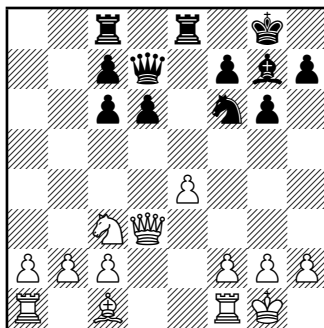
31: Black to move ■



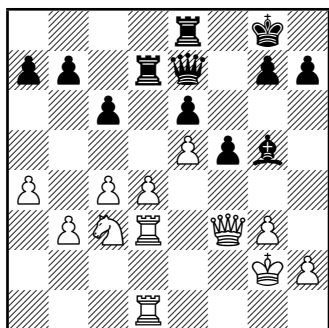
32: White to move □



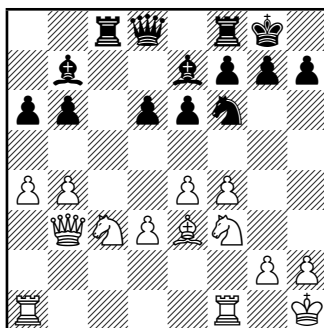
33: White to move ◻



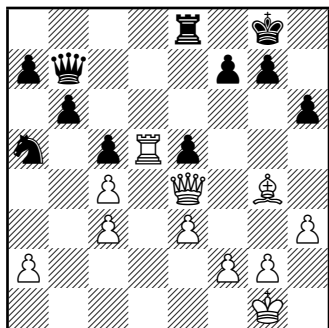
34: Black to move ◼



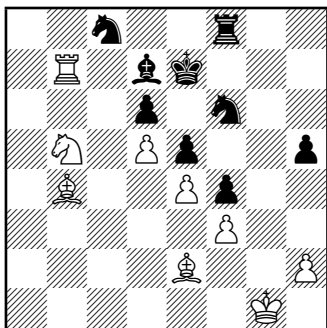
35: White to move ◻



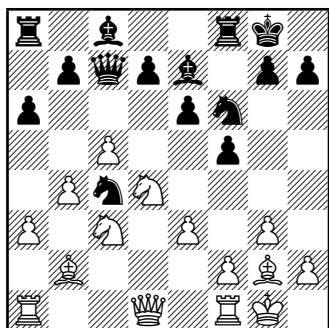
36: Black to move ◼



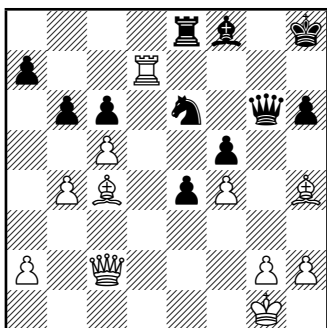
37: White to move □



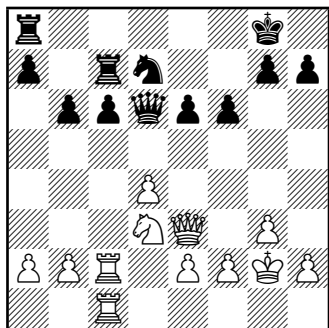
38: White to move □



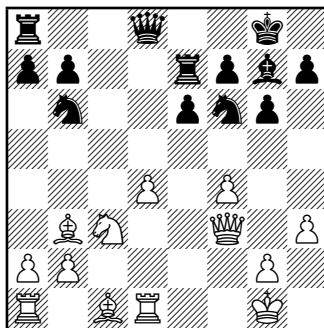
39: White to move □



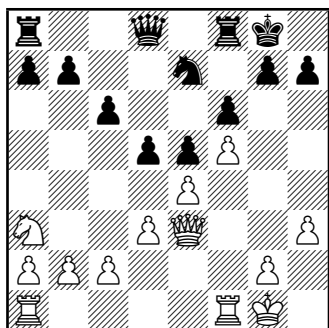
40: White to move □



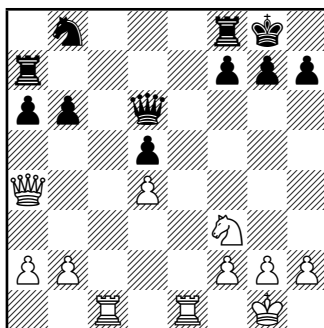
41: White to move □



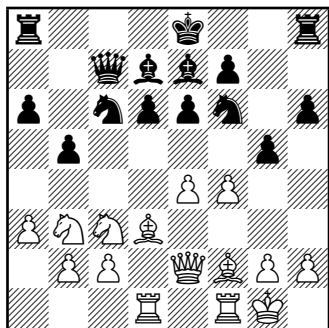
42: White to move □



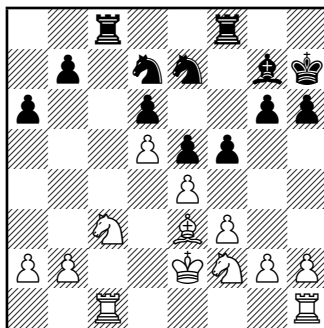
43: Black to move ■



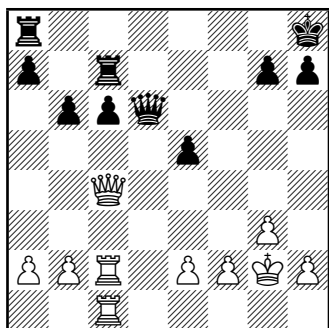
44: White to move □



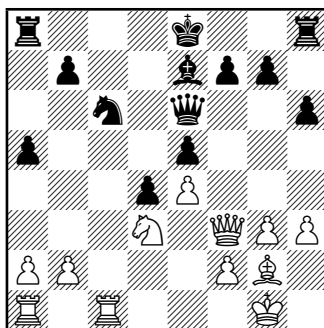
45: White to move □



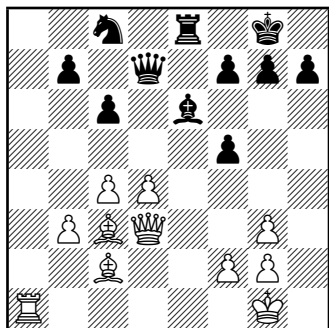
46: White to move □



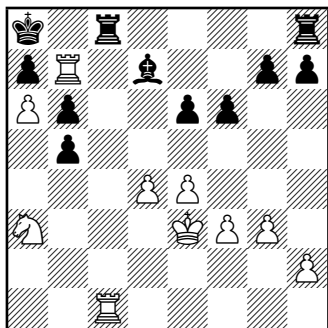
47: White to move □



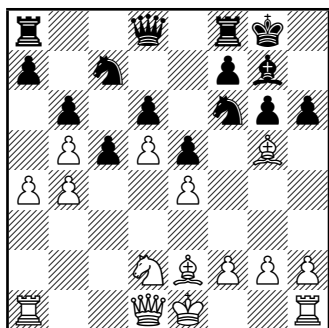
48: White to move □



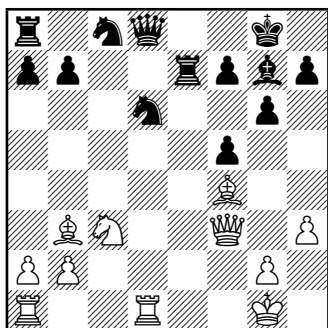
49: White to move □



50: White to move □

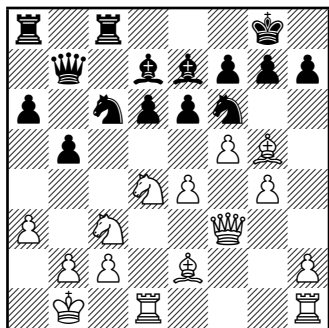


51: White to move □

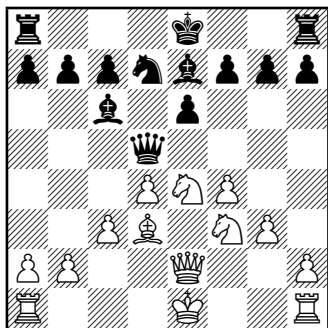


52: White to move □

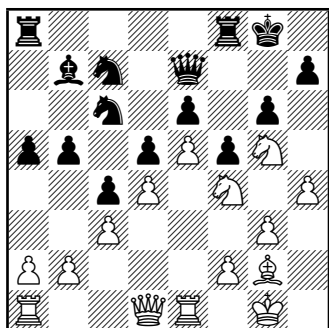




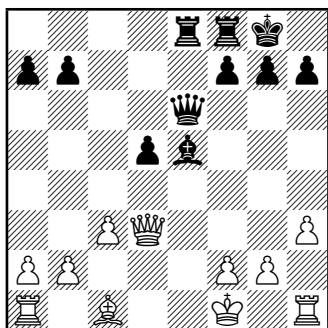
53: White to move □



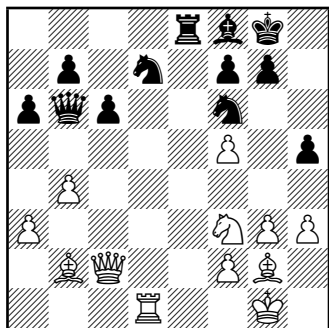
54: White to move □



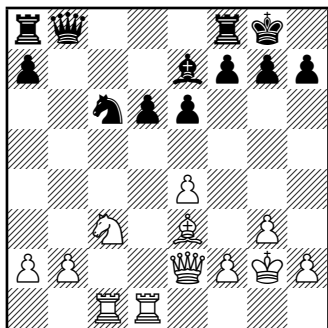
55: White to move □



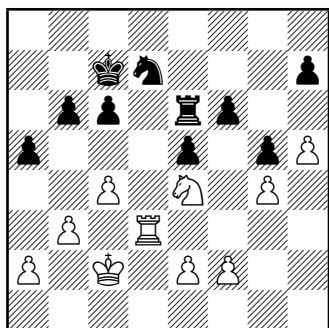
56: Black to move ■



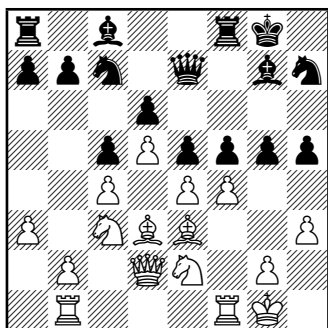
57: White to move □



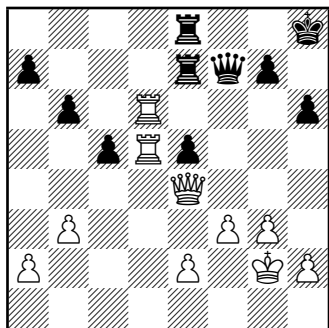
58: White to move □



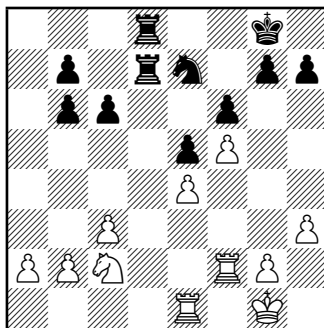
59: White to move □



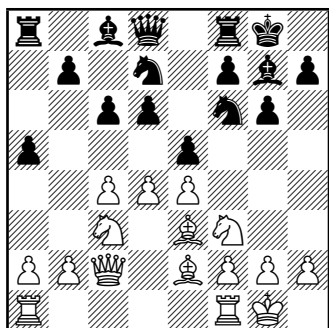
60: White to move □



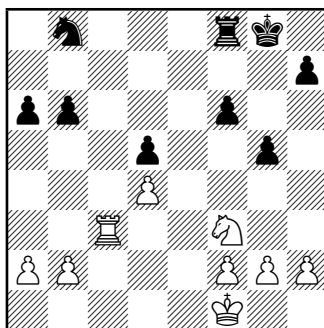
61: White to move ◻



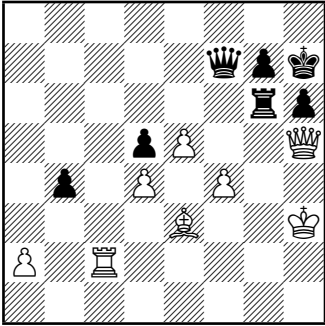
62: Black to move ◼



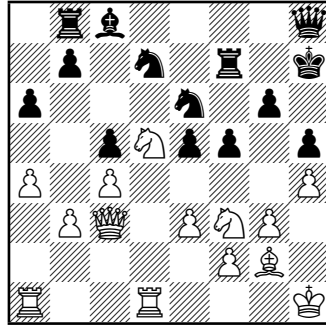
63: White to move ◻



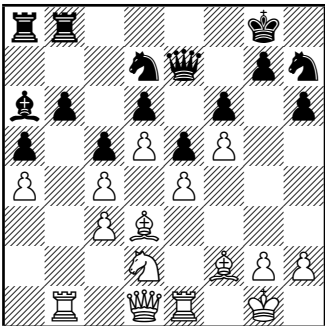
64: White to move ◻



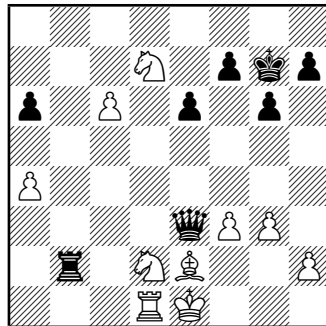
65: White to move ◻



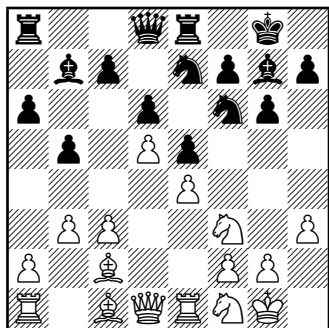
66: White to move ◻



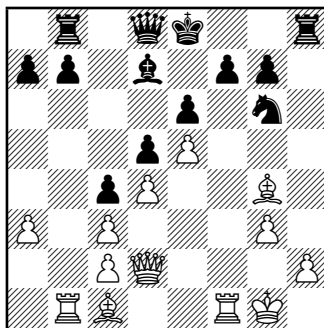
67: White to move ◻



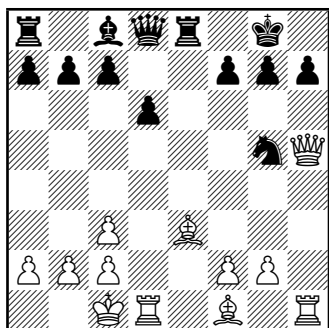
68: Black to move ◼



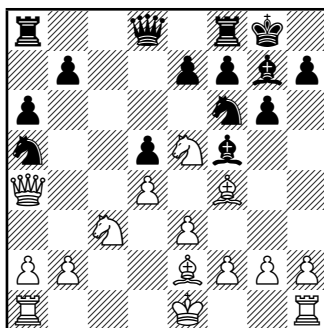
69: Black to move ■



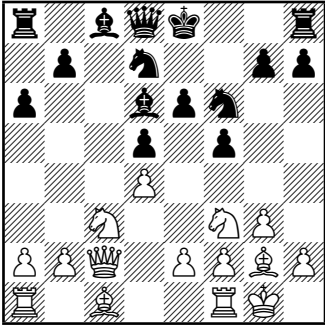
70: Black to move ■



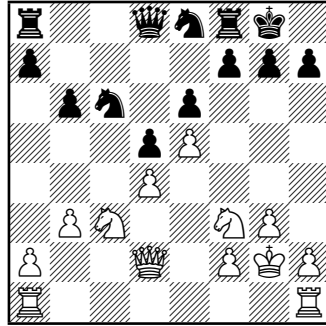
71: Black to move ■



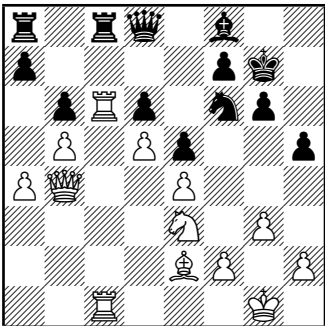
72: Black to move ■



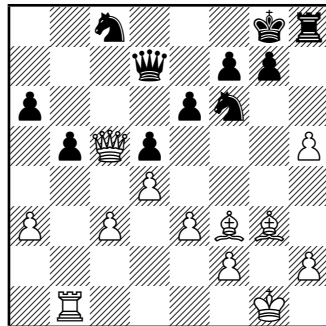
73: White to move □



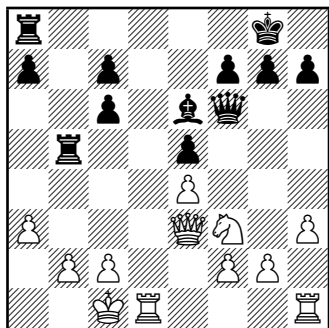
74: White to move □



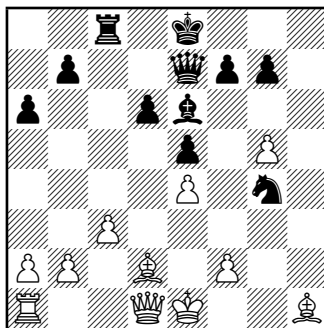
75: White to move □



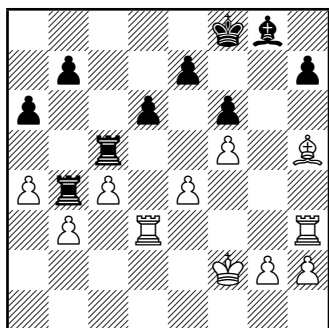
76: White to move □



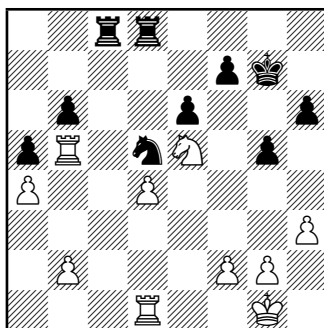
77: White to move ◻



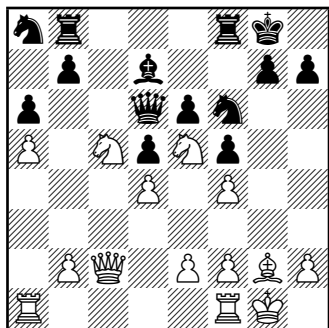
78: Black to move ◼



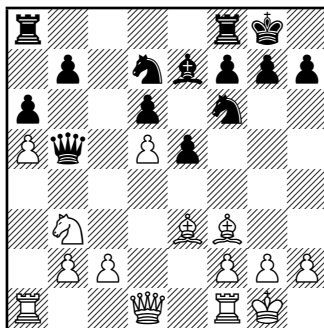
79: White to move ◻



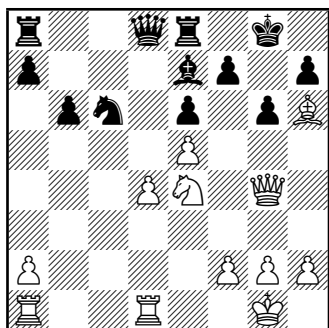
80: Black to move ◼



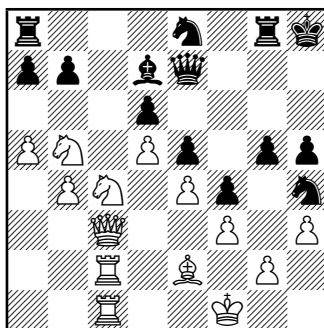
81: White to move □



82: White to move □

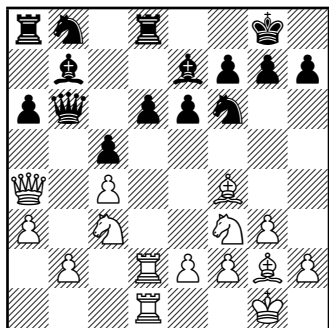


83: White to move □

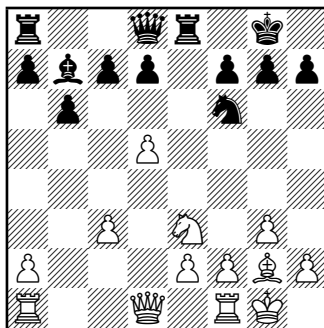


84: White to move □

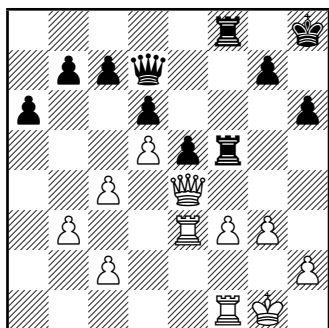




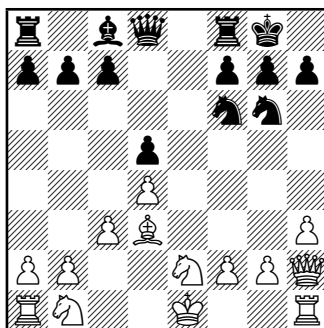
85: Black to move ■



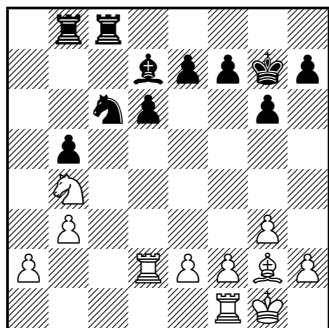
86: Black to move ■



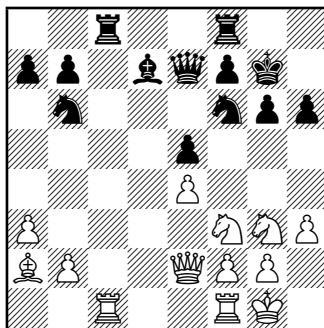
87: Black to move ■



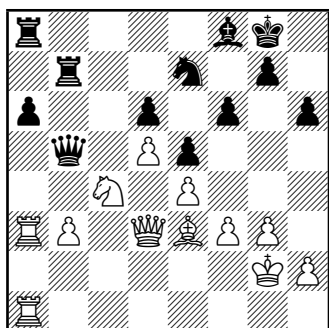
88: Black to move ■



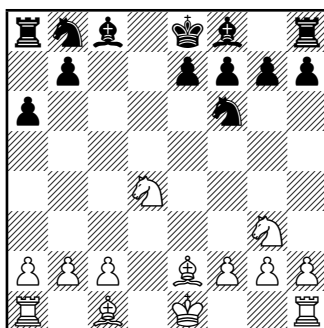
89: White to move □



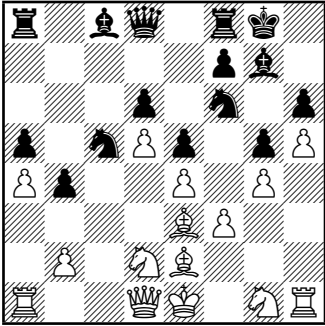
90: White to move □



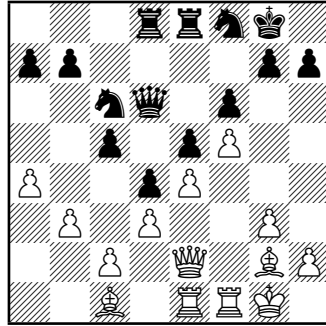
91: White to move □



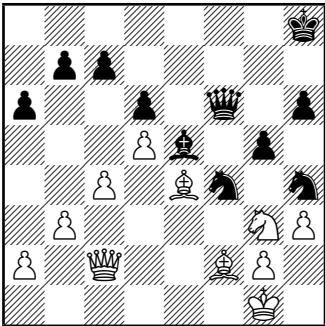
92: Black to move ■



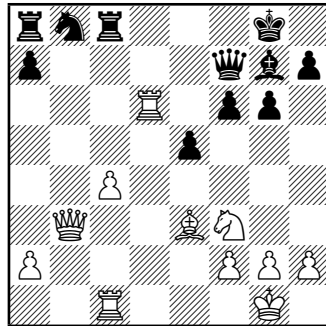
93: White to move □



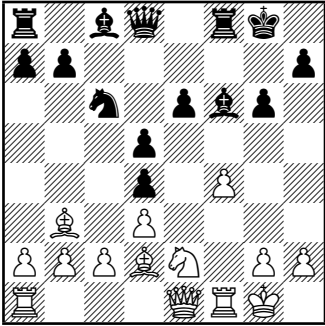
94: White to move □



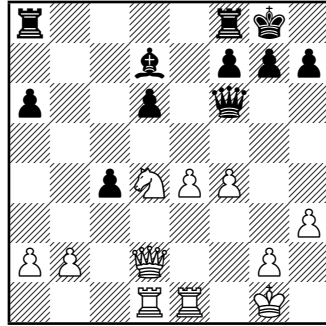
95: White to move □



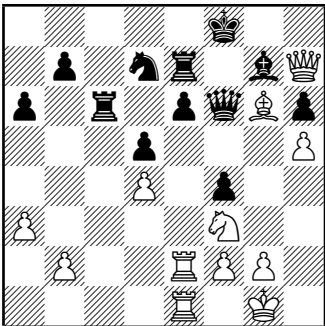
96: White to move □



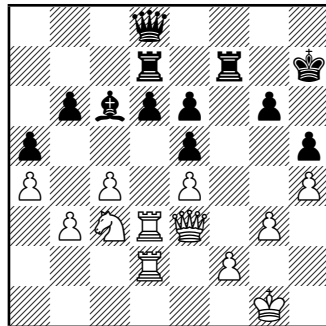
97: White to move □



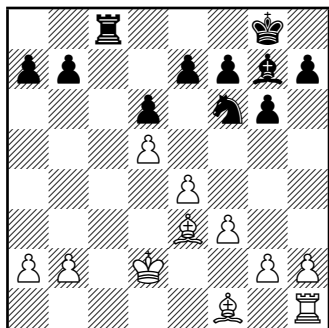
98: White to move □



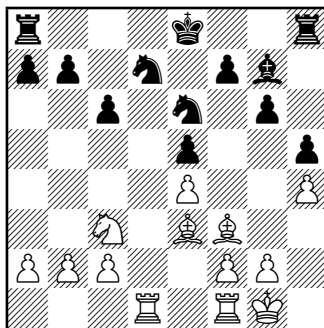
99: White to move □



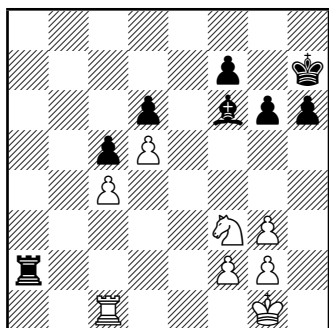
100: White to move □



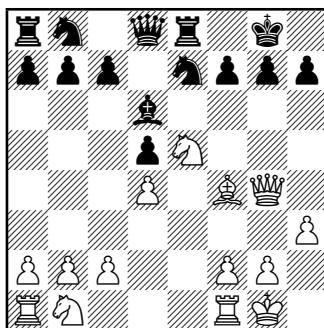
101: White to move ◻



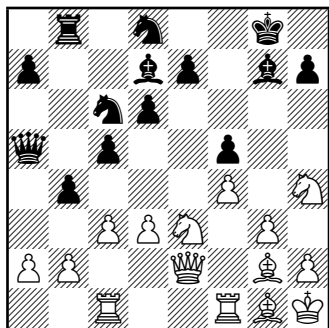
102: Black to move ◼



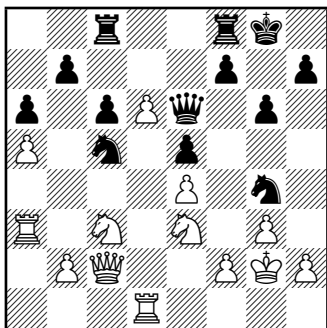
103: White to move ◻



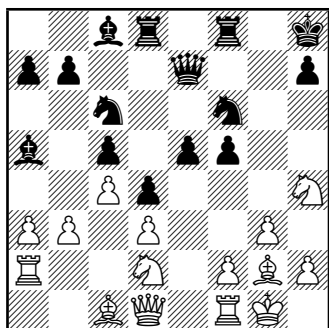
104: Black to move ◼



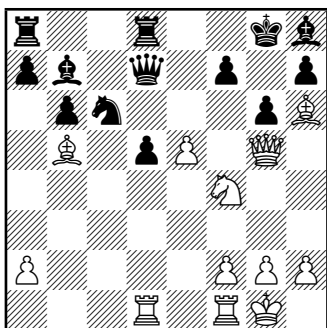
**105:** White to move  $\blacksquare$



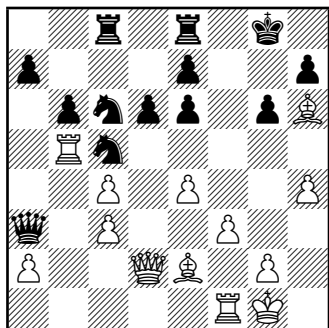
**106:** White to move  $\blacksquare$



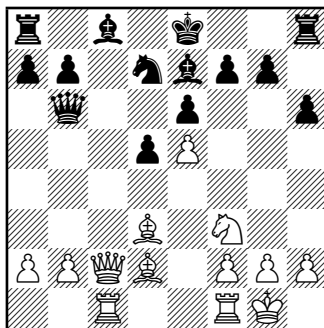
**107:** White to move □



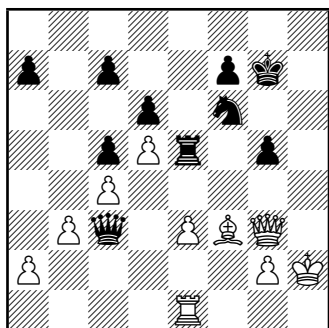
**108:** Black to move ■



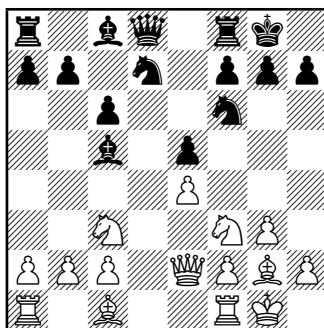
109: Black to move ■



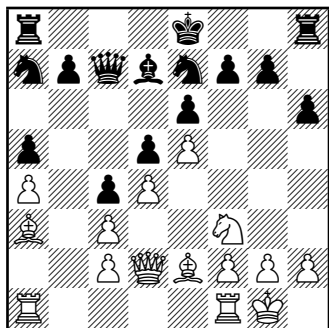
110: White to move □



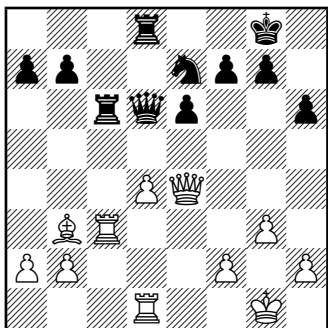
111: Black to move ■



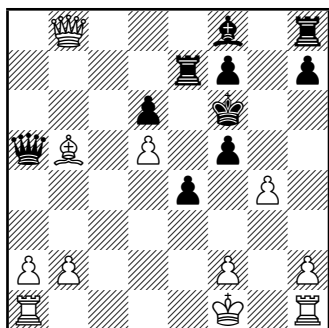
112: Black to move ■



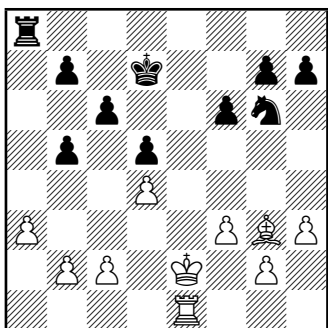
113: White to move ◻



114: Black to move ◼

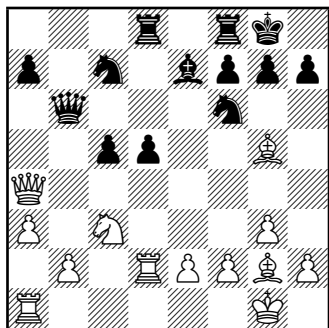


115: Black to move ◼

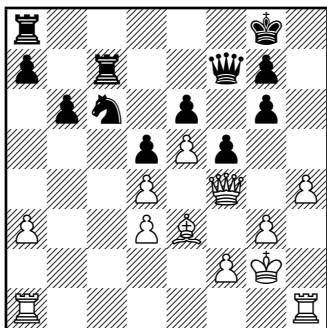


116: Black to move ◼

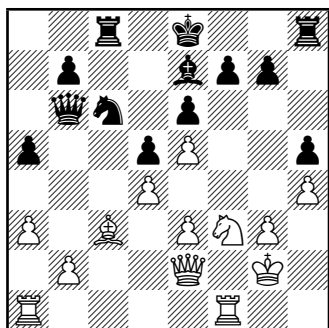




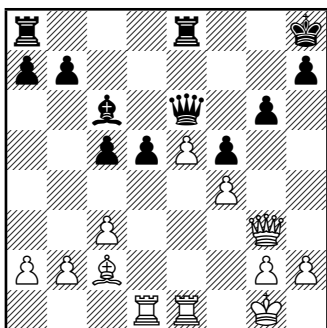
117: White to move ◻



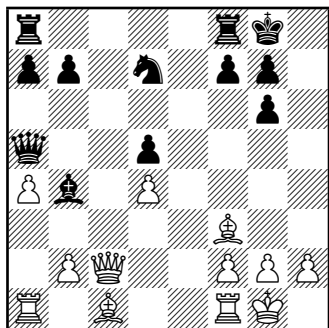
118: Black to move ◼



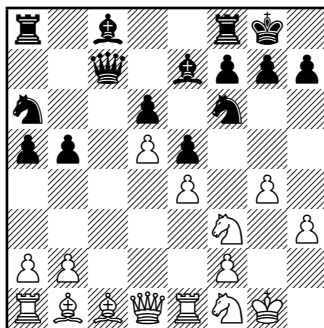
119: Black to move ◼



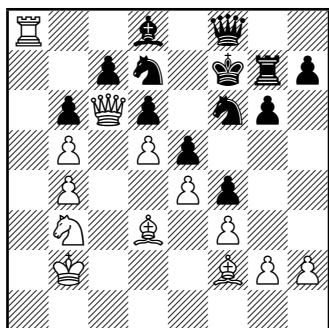
120: White to move ◻



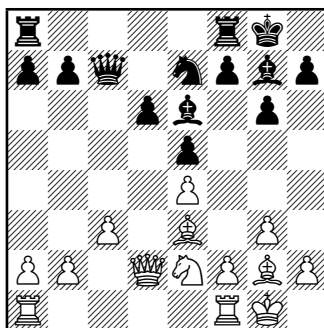
121: White to move ◻



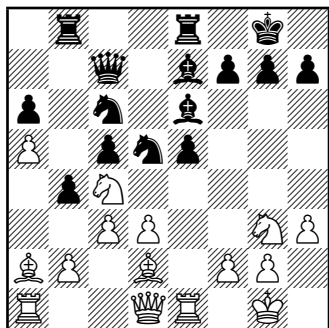
122: Black to move ◼



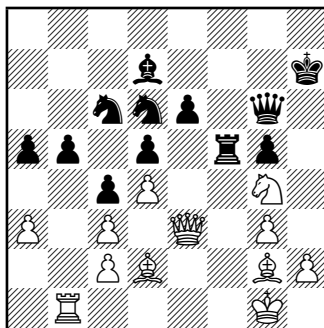
123: White to move ◻



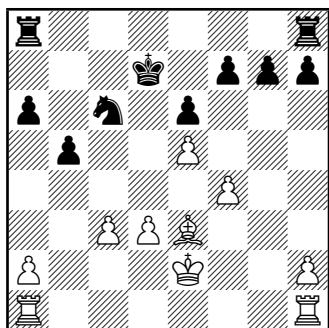
124: White to move ◻



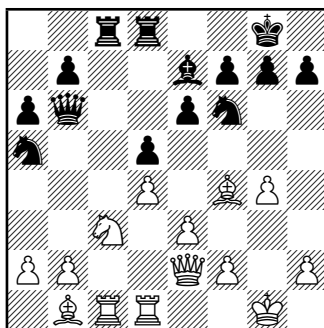
125: White to move □



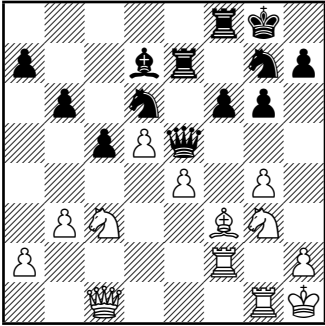
126: White to move □



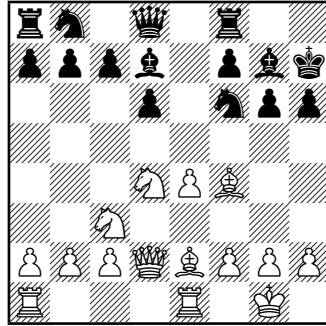
127: White to move □



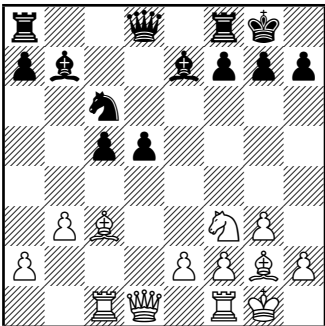
128: White to move □



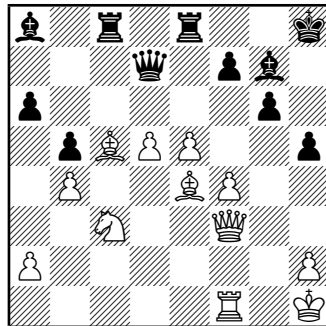
129: Black to move ■



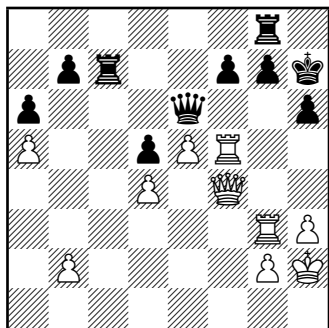
130: White to move □



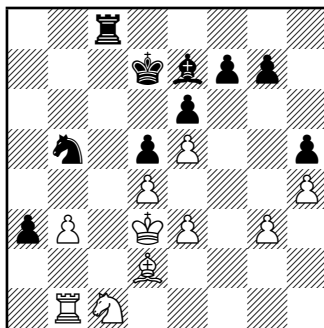
131: White to move □



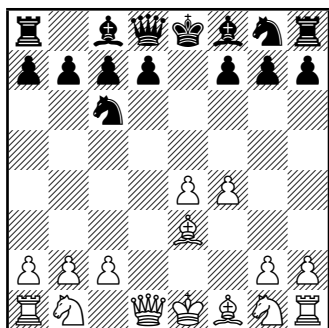
132: Black to move ■



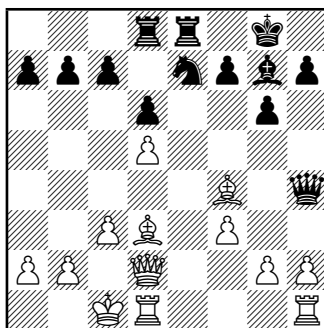
133: White to move ◻



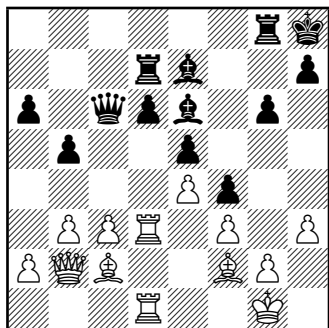
134: Black to move ◼



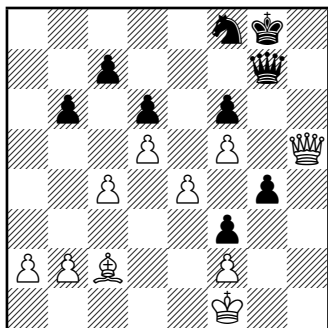
135: Black to move ◼



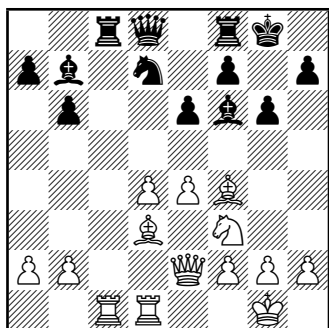
136: White to move ◻



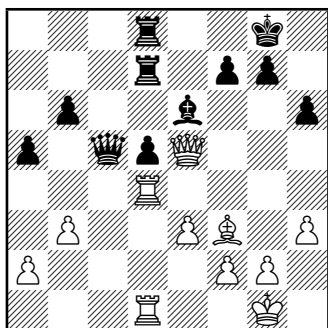
137: White to move □



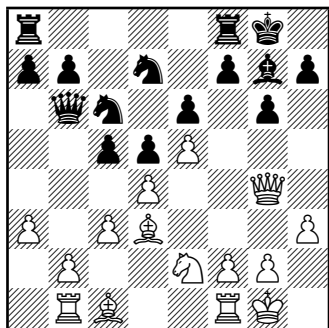
138: White to move □



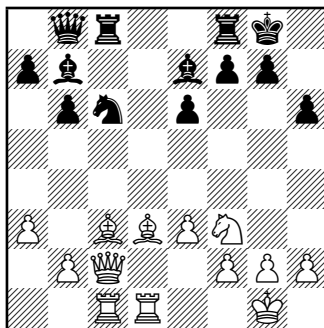
139: White to move □



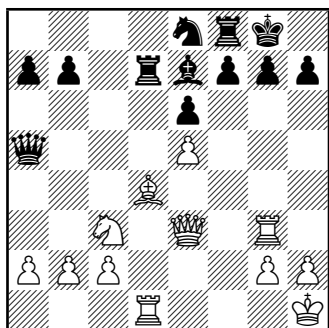
140: White to move □



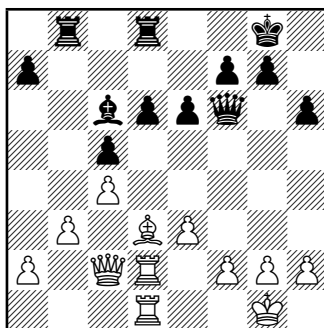
141: Black to move ■



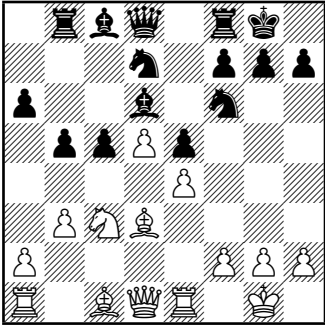
142: White to move □



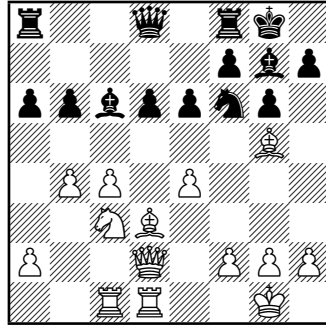
143: Black to move ■



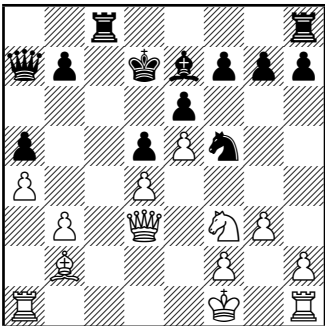
144: Black to move ■



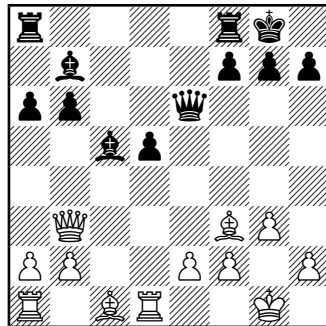
145: White to move ◻



146: Black to move ◼

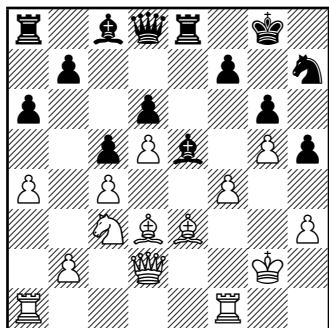


147: Black to move ◼

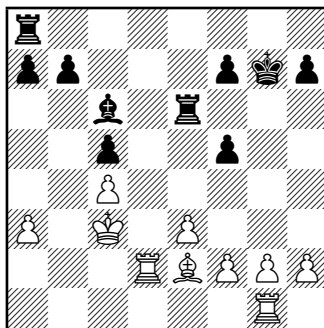


148: Black to move ◼

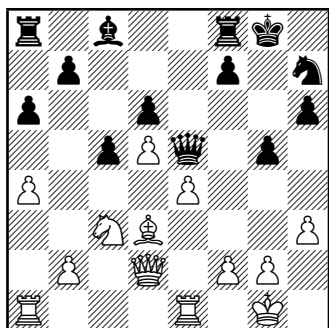




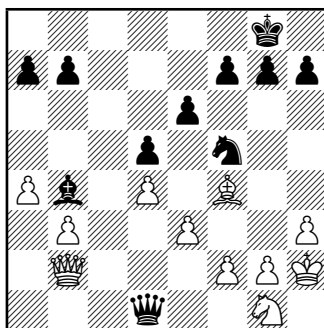
149: Black to move ■



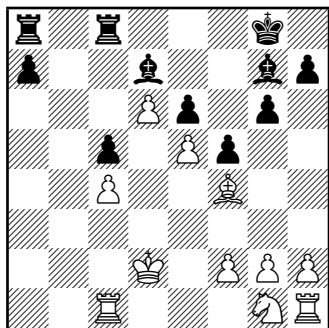
150: Black to move ■



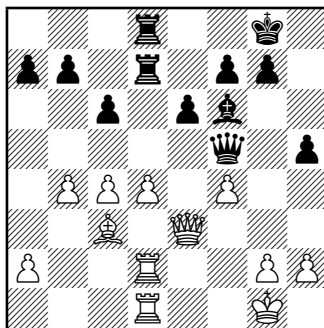
151: White to move □



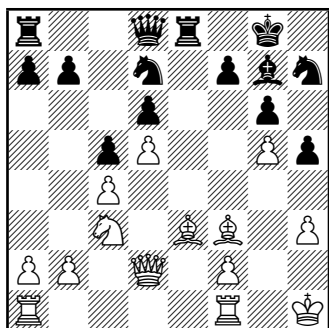
152: Black to move ■



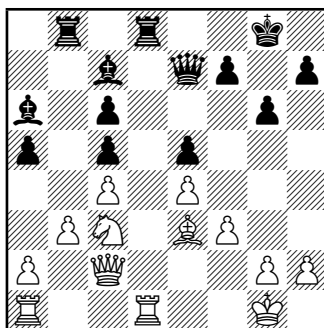
153: White to move ◻



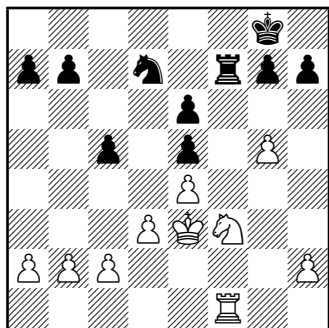
154: Black to move ◼



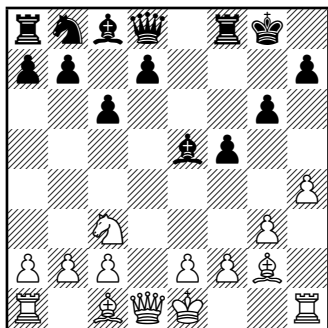
155: Black to move ◼



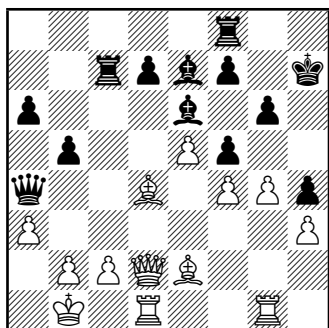
156: Black to move ◼



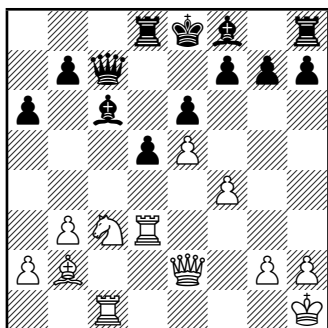
157: White to move □



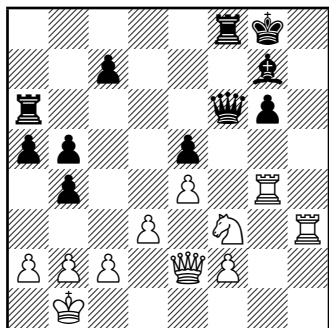
158: White to move □



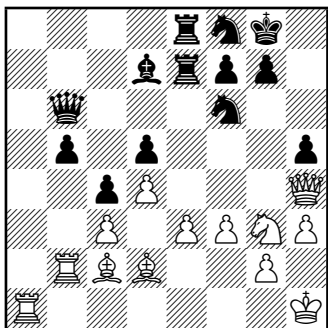
159: White to move □



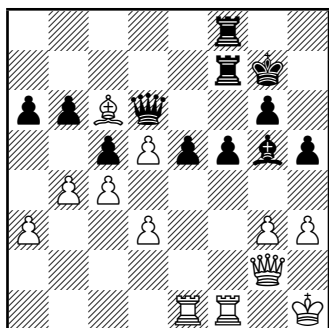
160: White to move □



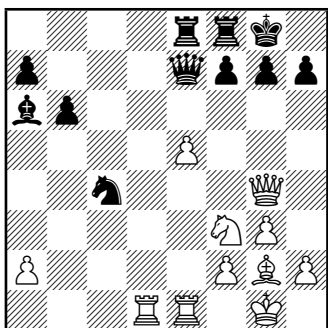
161: White to move ◻



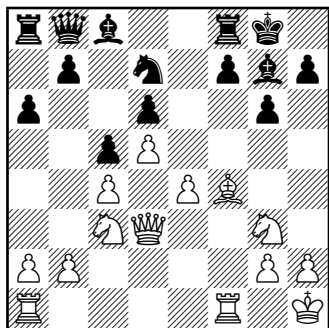
162: Black to move ◼



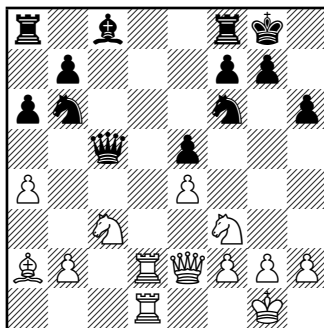
163: Black to move ◼



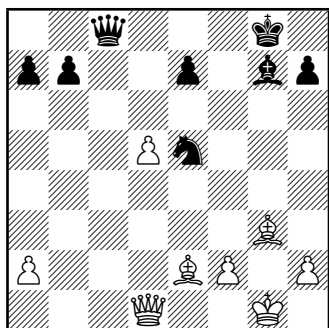
164: Black to move ◼



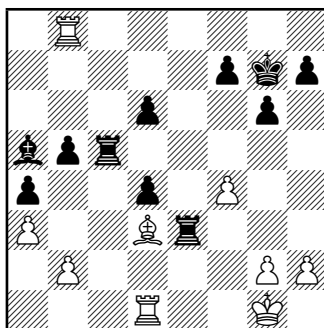
165: White to move ◻



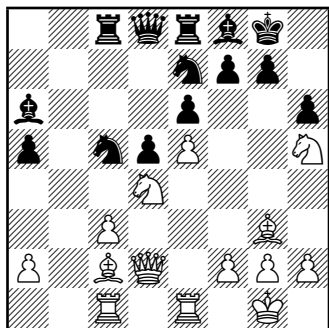
166: White to move ◻



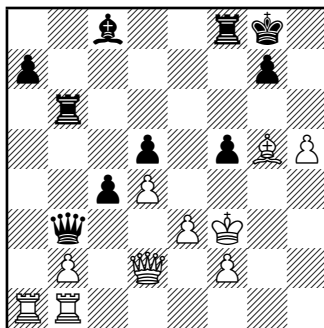
167: White to move ◻



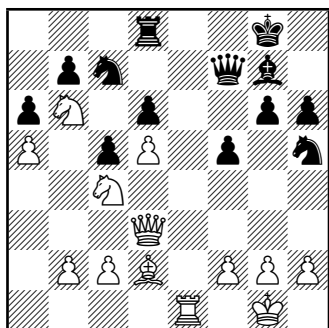
168: Black to move ◼



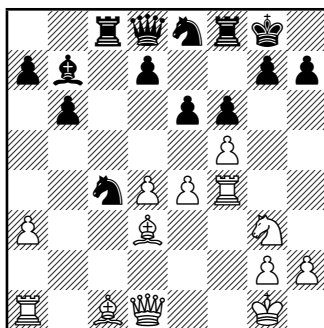
169: White to move ◻



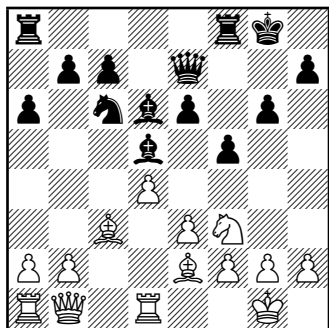
170: Black to move ◼



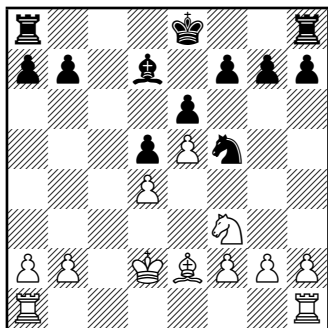
171: Black to move ◼



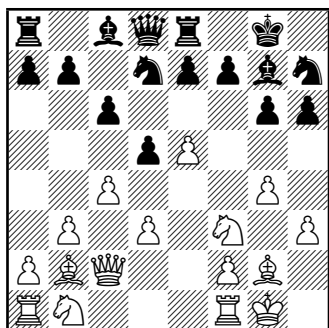
172: Black to move ◼



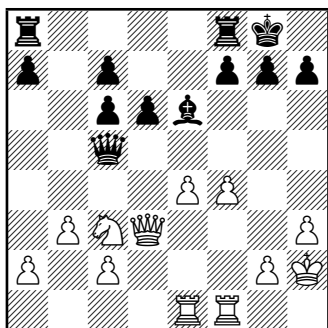
173: Black to move ■



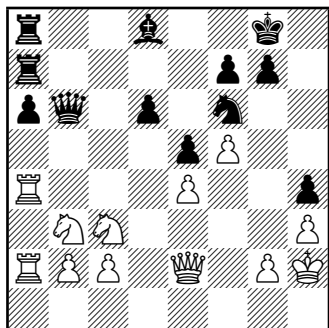
174: Black to move ■



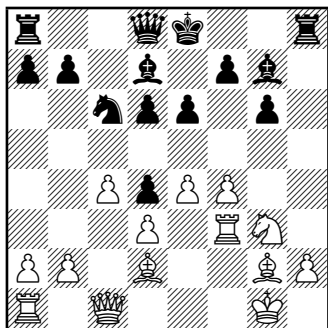
175: White to move □



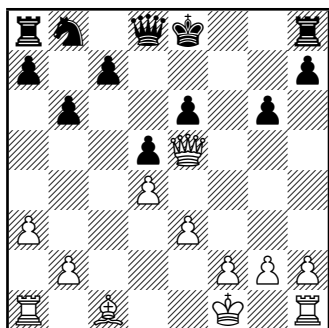
176: Black to move ■



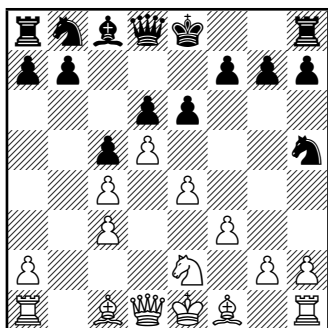
177: White to move ◻



178: Black to move ◼

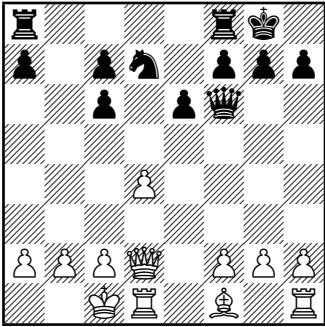


179: Black to move ◼

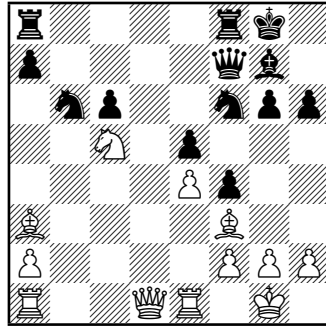


180: White to move ◻

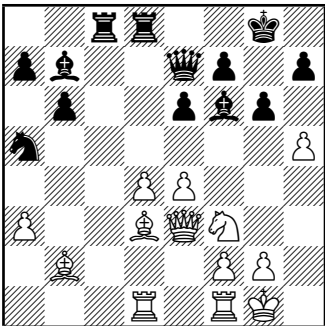




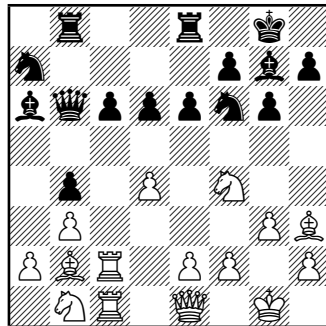
181: White to move □



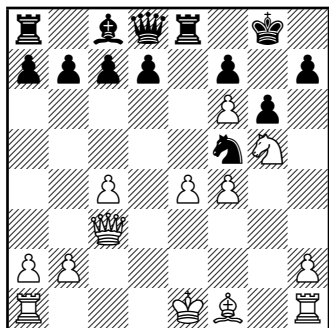
182: White to move □



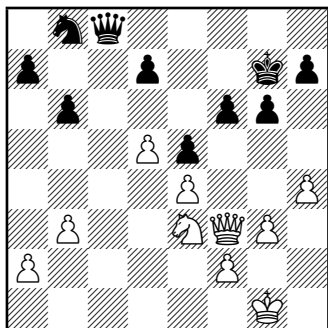
183: White to move □



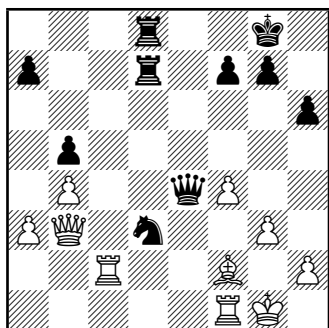
184: Black to move ■



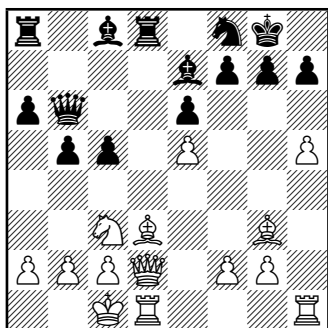
185: Black to move ■



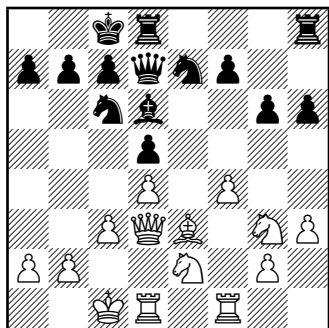
186: White to move □



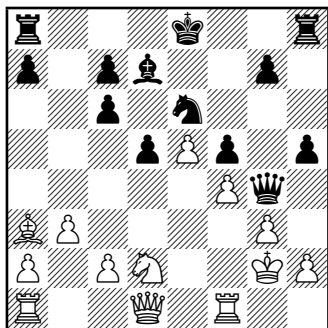
187: Black to move ■



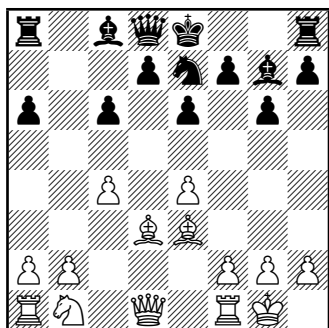
188: White to move □



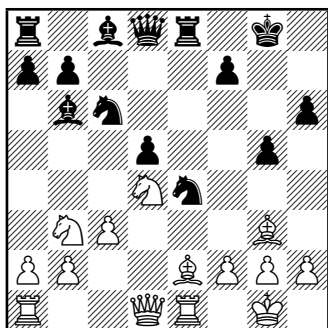
189: Black to move ■



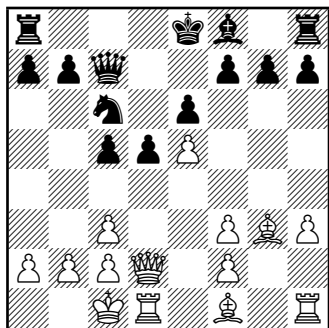
190: Black to move ■



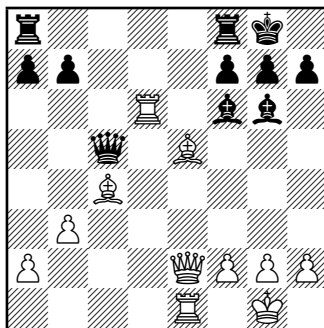
191: White to move □



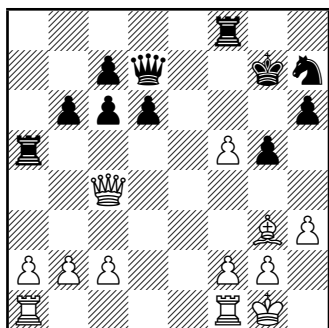
192: Black to move ■



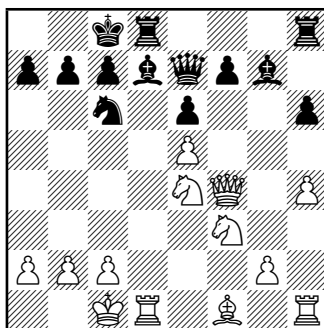
193: Black to move ■



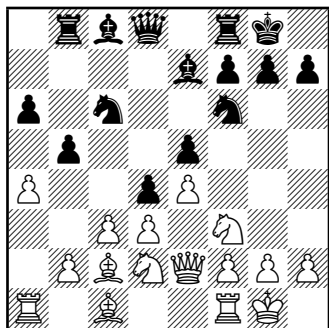
194: White to move □



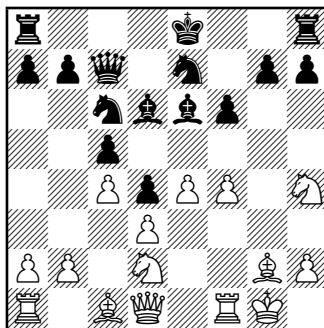
195: White to move □



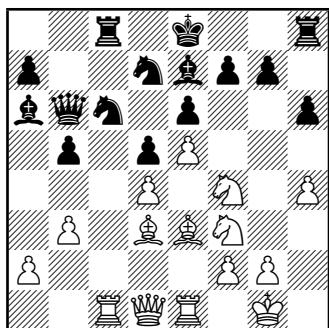
196: Black to move ■



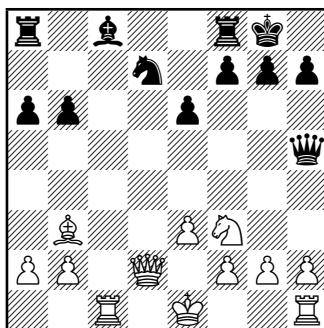
197: Black to move ■



198: White to move □



199: Black to move ■



200: White to move □

1. White is threatening 26. f5 to lock out Black. It needs to block the mobilised pawns center.

**25... f5! 26 ♖g2 ♘c7 27 ♜f3 fxe4 28 ♜xe4 ♘bd5** (Rubinstein - Grünfeld, 1923)

2. **24 ♜a7!**

This original manoeuvre helps White, who has an advantage in space, to avoid pointless exchanges and occupy the 'a' file.

**24... ♘e8 25 ♜c2 ♘c7 26 ♜ea1 ♞e7 27 ♜b1 ♜e8 28 ♘e2 ♘d8 29 ♘h2 ♜g7 30 f4!**± and White won:

**30... f6 31 f5 g5 32 ♜c2! ♜f7 33 ♘g3 ♘b7 34 ♜d1 h6 35 ♜h5 ♞e8 36 ♞d1 ♘d8 37 ♜a3 ♖f8 38 ♜1a2 ♖g8 39 ♘g4 ♖f8 40 ♘e3 ♖g8 41 ♜xf7+ ♘xf7 42 ♞h5 ♘d8 43 ♞g6 ♖f8 44 ♘h5** 1-0 (Karpov - Unzicker, 1974)

3. White wants to swap the strong ♘d3 with a ♘c3-e2-c1 manoeuvre.

**21... ♜xc3!**

and Black comes up with a useful swap: "good" Knight against "bad" Bishop, **22 ♜xc3 b5! 23 c5 b4! 24 ♜e1 a5** and Black is eventually going to win:

**25 g4 ♞d7 26 gxf5 ♞xf5 27 ♖h2 ♜e7 28 ♜g1 h6 29 ♜d2 ♖h7 30 ♜dg2 a4 31 ♜h4 axb3 32 axb3 ♜ea7! 33 ♞e2 ♜g8 34 ♜g4 ♜a3 35 ♞c2 ♜ga8 36 ♜1g2 ♞h5! 37 ♜g3 ♜a1 38 ♜h4 ♜e1 39 ♞e2 ♜aa1 40 ♞d2 ♜h1+ 41 ♖g3 ♜af1** 0-1 (Yudovich - Alatortsev)

4. Black has a "bad" Bishop but with the following brilliant manoeuvre he finds him a task:

**14... ♜d8! 15 ♞e2 c6! 16 ♜d1 ♜c7 17 h4 ♞e7 18 g3 ♖g7 19 ♘f3 a4 20 h5 ♜a5**

Black has now the initiative which eventually turns into a victory:

**21 ♜c1 ♞d7 22 ♜fd1 ♜ae8 23 ♖g2 f5! 24 exf5 ♜xf5 25 ♘e4 ♘xe4 26 ♞xe4 ♜ef8 27 ♘d3 ♜xh5 28 ♘h4 ♜xh4! 29 gxh4 ♜f4 30 ♞e2 ♞f5 31 c5 cxd5 32 cxd6 ♜b6 33 ♜f1 e4 34 ♜g3 d4 35 ♞d2 e3 36 ♞e1 ♞d5+ 37 ♖h3 ♞e6+ 38 ♖g2 ♞d5+ 39 f3 ♞xd6** 0-1 (Ivanov - Benjamin, 1990)

5. White plans to play 17. g4 followed by the manoeuvre ♘d2-f1-g3-f5, therefore

**16... h5! 17 ♜ed1 ♜fd8 18 ♘f1 g6 19 ♖f2 ♖g7 20 a4 ♘d7! 21 a5 ♘e5! 22 ♜e2 d4 23 exd4 cxd4 24 cxd4 ♜xd4 25 ♜xd4 ♜xd4** (Kasarian - Nikolaev, 2002)

6. 10 ♖e1!

Avoiding exchanges, White is preparing a central-pawns attack to the center

10... ♗h8 11 ♖e3! ♗e6 12 g3 ♙g5 13 ♗1g2 ♙xe3 14 ♗xe3 ♗g5 15 f4! exf4 16 gxf4 ♗h7 17 f5! ♗e5 18 ♖e2 c6 19 ♙d2 b6 20 d4± (Vasiukov - Khaba, 1989)

7. Exploiting the unstable position of ♙e5, Black takes the initiative.

18... d4! 19 exd4 ♙xg2 20 ♗xg2 f6!

Here it is clear that this intermediate move has already been planned

21 ♙f4 cxd4 22 ♖e4 e5 23 ♙d2 ♙a3 24 ♖b1 a5!± (Gulko - Karpov, 1988)

8. White has a clear superiority on the 'a' file, nevertheless its immediate opening is not decisive. A crucial Knight manoeuvre is instead required

27 ♗f1! ♙e7 28 ♗1xd2! ♗g7 29 ♗b1! ♗xe4!? threatening 30 axb5 axb5 31 ♖xa8 ♖xa8 32 ♖xa8 ♖xa8 (32... ♙xa8 33 ♖a6) 33 ♖xa8 ♙xa8 34 ♗a3 and Black is going to lose his b5 pawn. Searching for a counterplay, Black offered a piece but did not save the game.

30 ♙xe4 f5 31 ♙c2 ♙xd5 32 axb5 axb5 33 ♖a7 ♗f6 34 ♗bd2 ♖xa7 35 ♖xa7 ♖a8 36 g4 hxg4 37 hxg4 ♖xa7 38 ♖xa7 f4 39 ♙xf4! exf4 40 ♗h4 ♙f7 41 ♖d4 ♗e6 42 ♗f5 ♙f8 43 ♖xf4 ♗d7 44 ♗d4 ♖e1 45 ♗g2 ♙d5 46 ♙e4 ♙xe4 47 ♗xe4 ♙e7 48 ♗xb5 ♗f8 49 ♗bxd6 ♗e6 50 ♖e5 1-0 (Fischer - Spasskij, 1992)

9. 8 c4! ♙xf3

8... dxe4 9 ♖a4 ♖c8 10 ♗g5±

9 ♖xf3 dxe4

9... dxc4 10 ♗a3 ♖d4 11 ♖e2± ; 9... d4 10 e5!±

10 ♖xe4 ♖d7 11 ♗c3 ♗f6 12 ♖e3 e6 13 ♗a4 ♖d6 14 b3! ♙e7 15 ♙a3± (Homysa - Goliak, 1961)

10. 26 ♖e3!

Planning the invasion of 'e' file.

26... ♗h7

26... ♖e8 27 ♖cc3

27 ♖cc3 ♖b8 28 ♖d3 ♖a8 29 ♗g6 threatening 30. ♖e7

29... ♖xg6 30 hxg6 and White wins:

**30... ♖xg6** (30... ♜xg6 31 ♜e7) **31 ♜e6+ ♕h7 32 g4 c5 33 b5 ♘c7 34 gxf5 ♘xb5 35 f6 ♕g8 36 ♜c4 ♜e8 37 ♜g4 g5 38 ♜xe8+ ♙xe8 39 ♜e4 ♕f8 40 ♜e7 ♜g6 41 ♙e4 ♜h5 42 ♙f3 ♜g6 43 ♜xe8+! 1-0** (Lilienthal - Botvinnik, 1940)

11. Black's Rooks are inactive, but the natural move 18... ♜fe8 followed by 19. ♙d2 only leads to a Rooks' tradeoff on the open file and simplifies the position. The correct play is

**18... ♜a6! 19 ♙d2 ♜b6!±** (Saidy - Fischer, 1969)

12. **23 a4!**

There is no room for the White's Rook invasion on the 'd' file, for this reason White starts to play on the queen-side **23... ♜c8**

**23... a5 24 ♜b3+-**

**24 ♜b3 ♕d7 25 a5 ♕c6 26 axb6 axb6 27 ♜a3 ♙g7 28 ♜a7+-** and White wins (Alechine - Euwe, 1922)

13. Threatening ♖g3-f4-g5-f6. Black has no choice but to trade Queens.

**31 ♕g3! ♜b7 32 ♜xb7 ♙xb7 33 ♕f4±** and White is going to win the endgame in spite of having a pawn less (Black's dark-squared Bishop is too "bad"): **33... ♕f8 34 ♕g5 ♕e7 35 ♙e4 ♙a8 36 f3! ♙b7 37 g4 ♙a8**

**37... h×g4 38 f×g4** followed by h4-h5

**38 g×h5 g×h5 39 f4!**

**39 ♕×h5? f5! 40 exf6+ (40. ♙d3 c5! ) 40... ♕×f6** with unclear play

**39... ♙b7 40 ♙f3 ♙a8 41 ♕×h5 1-0** (Karpov - Lautier, 1992)

14. **12 ♘d5! cxd5**

**12... exd5 13 ♙d3** winning a pawn

**13 ♙d3 h6 14 ♜c7±** (Capablanca - Vidmar, 1922)

15. **22... h5!**

A multi-functional move. Dark-squared Bishop becomes stronger (c1-h6 diagonal) and, if necessary, there is a possibility to play h5-h4-h3.

**23 ♘d6 ♜d6±** and Black is going to win: **24 ♜d3 ♜d7 25 b3 ♙f5 26 ♙e4 ♙xe4 27 ♘xe4 ♜c6 28 ♘d2 ♙h6! 29 ♜cd1 ♜e3! 30 ♜c2 ♜be8 31 ♘b1 h4! 32 ♜d3 h3 33 f3 ♜xf3! 34 exf3 ♜xe1+ 35 ♕f2 ♜h1 0-1** (Evchin - Nikolaev, 2000)



16. **31 g4! ♖c8 32 ♜e6 ♜c6 33 f5! ♞a2**

33... ♜xe6 34 fxe6 ♜d8 35 ♙d3 ♞a7 36 ♜xf6! gxf6 37 e7! ♜xe7 38 ♜xh6+ ♚g8 39 ♙c4+-

**34 ♜e7 ♜f8 35 ♜fe1** 1-0 (Uhlmann - Kottnauer, 1968)

17. **16 dxc5! dxc5 17 ♜d1 ♜ad8 18 ♜d5±**

Outpost on d5 is more important than the doubled pawns fictional weakness. (Botvinnik - Chekhover, 1938)

18. Black plans to play 17... ♜e7 followed by 18... ♜fd8, but

**17 b4! ♙xd4** 17... ♙xb4? 18 ♜xe6 fxe6 19 ♜b5±

**18 ♜xd4 ♜e7 19 ♜fd1 ♜f6 20 b5 ♜fd8 21 ♜d3! ♜xd4 22 ♜xd4±**

White has the upper hand thanks to the Bishops' couple and the control over the open file d. (Korčnoj - Reshevsky, 1968)

19. **16 c5!**

with play on Black's dark-squared Bishop block. Whilst Black takes control over the center on d5, still White has the advantage.

**16... ♜e7**

16... bxc5? 17 dxc5 ♜xc5 18 ♜b4 ♜e7 19 ♜dc1+-

**17 b4 ♜fd8 18 ♜c2 ♜f6 19 ♜e5 ♜d5 20 a3!±** (Portisch - Radulov, 1977)

20. **22 ♜h5! g6**

Move 22... ♜d6, planned by Black, is not good because of 23. ♜xd5! ♙xd5 24. ♜xd5 ♜d8 25. ♜xd6 ♜xd6 26. ♙xd6 ♜xd6 27. ♙xc4+-

**23 ♜g5 ♜d8 24 ♜g4 ♜d7 25 g3! ♜e8**

25... ♜d6? 26 ♜xd7 ♜xd7 27 ♙h3 ♜dd8 28 ♜e6 ♙d7 29 ♙xd6 ♙xe6 30 ♙xe6+ ♚g7 31 ♙xd5 ♜ac8 32 ♙c5+ ♚h6 33 ♙b7+-

**26 ♜ae1 ♜xe5 27 ♜xe5** (Bannik - Tal', 1958)

21. **29 ♚b4!**

White opts for an unexpected King's march.

**29... ♜e4 30 ♚a5! ♜d6 31 ♚b6! ♜c6 32 ♚a7±**

and White is about to win this endgame easily: **32... ♜c7 33 ♙b6! ♜c6**

**33... ♜c8+ 34 ♚b8**

34 ♖a5 ♖e5 35 ♜f3 ♜c5 36 ♜b4 ♜c7 37 ♜b6 ♜d7 38 ♜e1 f6 39 a4 ♜d8 40 ♜xd6! ♜xd6 41 ♜xb7 ♜d2 42 ♜d1! ♜xd1 43 ♜xd1+-  
43...a5 44 ♜b6 ♜c7 45 ♜c6 ♜f4 46 ♜b7 ♜e5 47 ♜e2 ♜d6 48 g3 f5 49 ♜c6 ♜b8 50 ♜c4 e5 51 b4 ♜a7 52 ♜b7 ♜xf2 53 bxa5 ♜xg3 54 a6 ♜f2 55 ♜e6 f4 56 ♜d5 h5 57 ♜f3 1-0 (Sveshnikov - Browne, 1981)

22. Black's position "holds" thanks to ♜d5; therefore it has to be traded off. Not good 35. ♜b4 ♜e7! .

Correct play is **35 h4! gxh4**

Worse 35...h6 36 hxg5 hxg5 37 ♜f2 with the following ♜h1 and ♜e4  
**36 ♜f4 ♜xf4 36... ♜e7? 37 ♜xe6+- 37 ♜xf4**

Position is simpler, and White has the advantage

**37... ♜d8 38 ♜g5 ♜g7 39 ♜xh4 ♜d5 40 ♜g5 ♜d8 41 ♜f4 ♜d7 42 ♜e3 ♜b7 43 b4 a6 44 ♜f1 ♜a7 45 ♜f6 ♜e7 46 a4 ♜g8 47 a5! b5 48 d5! exd5 49 e6 ♜g7 50 g5 h5 51 ♜d4 ♜c7 52 ♜c5 ♜c8 53 ♜b6 d4 54 e7 1-0 (Alechine - Treybal, 1925)**

23. **14 ♜d4!**

Trading off light-squared Bishops, White takes the the outpost on c6.

**14... ♜xg2 15 ♜xg2 ♜c7 16 ♜b3! ♜fc8 17 ♜fc1 ♜b7 18 ♜f3 ♜d5 19 e4 ♜5xf6 20 b5! a6 21 ♜c6 ♜f8 22 a4 axb5 23 axb5±**  
(Botvinnik - Donner, 1963)

24. **16... a5!**

The obvious 16...O-O allowed White to strengthen his position after 17.c3 followed by 18. b3 , 19. ♜b2 , but now White has no time to build up a defensive line.

**17 c3**

17 ♜xa5? ♜xe3 18 ♜xe3 ♜c4+

**17... ♜b6 18 b3 a4! 19 c4 ♜d4 20 ♜ab1 f5! 21 exf5 ♜xf5 22 ♜c2**  
O-O Black's strong initiative (Klundert - Keres, 1968)

25. **26 ♜h4!**

This unexpected move allows White to enter the endgame, outnumbering his opponent.

**26... ♜d7 27 ♜d8! ♜xd8 28 ♜xd8 ♜d7 29 ♜c7 ♜c5 30 ♜xd6 ♜c8 31 ♜b6 ♜a4 32 ♜xe6 ♜xb2 33 ♜xe5+-** (Smyslov - Reshevsky, 1948)

26. **19...f3!**

“Lock up” White’s dark-squared Bishop.

**20 ♖xf3 ♜e5 21 ♖e2 g4** (Speelman - Kasparov, 1988)

27. With the simple move **25...c6!** Black shifts his Bishop on the good diagonal and develops an unstoppable attack against White’s dark squares.

**26 ♖e8 ♖c7 27 ♖xd8+ ♖xd8 28 ♜g1 ♖h2+ 29 ♜f2 ♖b6+ 30 ♜e1 ♖g3+ 31 ♜e2 ♖e5+ 32 ♖e4 ♖xe4** 0–1 (Falkbeer - Anderssen, 1851)

28. **18...e5!**

Taking control on the central d5 and dark squares.

**19 c5**

**19 ♖xd6 ♖g5+ 20 ♜h1 ♜d4**

**19... ♖g5+ 20 ♜h1 dxc5 21 ♖xc5 ♖d8 22 ♖c4 ♖xd1+ 23 ♖xd1 ♖h4** and Black has won: **24 ♖d5 ♖d8 25 ♖d3 ♖xf2 26 ♖xd8 ♜xd8 27 ♖e2 ♖d4! 28 ♖e1 ♜e6 29 ♖b3 ♜f4 30 ♖f1 ♖b2 31 ♖d5 b5 32 ♖g1 ♖e2** 0–1 (Kernazhitskii - Nikolaev, 1982)

29. **23 ♖g4!**

Queens exchange puts Black’s Knight in a bad position.

**23...f5**

**23... ♖xg4 24 hxc4 f6 25 a4!±**

**24 ♖c4! ♖xc4 25 bxc4+– 25... ♖f8**

**25... ♖e8 26 ♖d7**

**26 ♖xe5 ♖f7 27 c5 ♜c8**

**27... ♜b5 28 ♖d3!**

**28 f4 b6? 29 ♖d8+ ♖f8 30 ♖xc8!** 1–0 (Uhlmann - Schmidt, 1967)

30. **15...f3! 16 ♜xa8 ♖e8!!**

Due to his big advantage in space, Black can take the liberty to make some “quiet” moves. Thus, he decides to push the Queen into the attack stage.

**17 ♖xe5 ♜xe5 18 ♜c7 ♖g6 19 ♖xf3**

**19 g3 ♖g4 20 ♜h1 ♖h3 21 ♖g1 ♜g4+–**

**19...exf3 20 g3 ♖g4** 0–1 (Kanikevich - Nikolaev, 1988)

31. **22...e4! 23 ♖xf6 ♗xf6 24 fxe4 f4! 25 ♜f2 ♜e5±**

Despite being a pawn down, Black has the advantage: “invincible” Knight against “bad” Bishop and there is a possibility of an assault against King’s side pawns where Black has the majority (three against two) (Pilnik - Geller, 1955)

32. **16 ♖g6!**

An unforced combination, whose possibility of realisation proves a superiority in space.

**16...h×g6**

16... ♜d7 17 ♗h5 h6 18 ♜b1! ♗d8 19 ♜d2 ♖e7 20 ♜f3 e ♜g5 with advantage.

**17 ♜×g6 ♗f7 18 ♗h5 ♖g8 19 ♗h6 ♜e7 20 ♜g2 g5 21 ♜ag1!**  
(Kharitonov - Dautov, 1986)

33. **15 ♜g5! h6**

15... ♖g6 16 ♖×g6 f×g6 (16... h×g6 ) 17. ♗h3±

**16 ♗h3 g6 17 g4! h×g5 18 g×h5 f6 19 exf6 ♜×f6 20 h×g6 ♜e4 21 f3 ♜d2 22 ♜f2 ♜b3 23 ♖×g5! ♗×g5+ 24 ♜g2+-** (Gligorić - Smyslov, 1959)

34. **15... ♗e6! 16 f3 ♜d7 17 ♖d2 ♜e5 18 ♗e2 ♜c4 19 ♜ab1 ♜a8 20 a4?**

Better 20 b3 ♜×d2 21 ♗×d2 ♜a3±

**20... ♜×d2 21 ♗×d2 ♗c4! 22 ♜fd1 ♜eb8 23 ♗e3 ♜b4+-** (Nimzowitsch - Capablanca, 1914)

35. **33 c5!±** (con l’idea ♜c3–b1–a3–c4–d6) (Botvinnik - Flohr, 1936)

36. **15...d5!**

A well calculated attack against the center.

**16 e5 d4! 17 ♜×d4 ♜g4 18 ♖g1 ♜×h2! 19 ♜fc1**

19 ♖×h2? ♖×b4! 20 ♗×b4 ♗h4#

19 ♜×e6 ♗×d3 20 ♜fc1 ♗h3+-

**19... ♜g4 20 ♜e4 ♖×b4! 21 ♜g5 ♗d5 22 ♜e4 ♗×b3 23 ♜×b3 ♖d5±** (Sigurjonsson - Stein, 1972)

37. **23 ♖f5!**

Defending the Queen and preparing Rook’s invasion on the seventh rank

**23... ♗b8 24 ♜d7 ♜d8 25 ♗×e5! ♜×c4 26 ♗×b8 ♜×b8 27 ♖e4!**

and White wins: 27... ♖a3 28 ♙d5 ♜f8 29 e4 a5 30 c4 b5 31 cxb5 ♖xb5 32 e5! a4 33 f4! ♖d4 34 ♜f2 g5 35 g3 gxf4 36 gxf4 ♖e6 37 ♜e3 c4 38 f5 ♖c5 39 ♜c7 ♖d3 40 e6 fxe6 41 fxe6 1–0 (Botvinnik - Chekhov, 1938)

### 38. 37 ♖a3!

Knight switches over c4 with the idea of ♖a5, or ♖xe5.

37... ♜g8+ 38 ♜f2 ♜d8 39 ♖c4 ♜g6 40 ♙f1! ♖h7

Otherwise 40... ♜e8 41 ♜b8 ♜d8 42 ♖a5+–

41 ♜xd7+! ♜xd7 42 ♙h3+ 1–0 (Gligorić - Donner, 1971)

### 39. 14 ♖xf5! ♙xc5!

14... exf5 15 ♜b3± ; 14... ♖xb2 15 ♖xe7±

15 bxc5 ♜xc5

15... ♖xb2 16 ♜d6!±

16 ♖h6+! g×h6 17 ♙c1±

As a result of the manoeuvre White has gained the advantage of the Bishops' couple and paved the way to attack the rival King (Rubinstein - Tarrasch, 1922)

### 40. Switching the Bishop over the long diagonal gives the conclusive superiority

30 ♙e1! bxc5 31 ♙c3+ ♜g8 32 bxc5 ♙xc5+ 33 ♜h1 ♜e7 34 ♜xe7 ♙xe7 35 ♜a4 ♜f8 36 ♜xa7+– (Smyslov - Jansa, 1968)

### 41. 19 ♜f4! e5

After 19... ♜xf4? 20 ♖xf4 Black has lost his Pawn

20 dxe5 ♖xe5 21 ♖xe5 fxe5 22 ♜c4+ with White's upper hand (Lilienthal - Dubinin, 1940)

### 42. 17 f5!

Giving up the Pawn, White takes the initiative.

17... exf5

After 17... gxf5 18 d5! black Pawns' structure crumples, and now White firmly takes control of the center.

18 d5 ♖e4 19 ♙f4 with compensation for giving up material (Nikolaev - Perun, 1986)

43. Black's best plan is to roll by the endgame.

**15... ♖b6! 16 ♜×b6 a×b6 17 c3 ♜fd8 18 ♜f2**

**18 ♜fd1 ♜a4!**

**18... ♜d7 19 ♜c2 ♜ad8±** (Alapin - Rubinstein, 1908)

44. **19 ♖c2!**

White takes the open rank. “‘c’ rank is more important than ‘e’'s, whilst e7, in future, can be defended by the King, c7 is still vulnerable” (M. Botvinnik)

**19... ♜e7 20 ♜×e7 ♖×e7 21 ♖c7 ♖×c7 22 ♜×c7±** (Botvinnik - Alechine, 1938)

45. Black has played g7–g5 with the intention of controlling central e5 with the Knight. Thanks to this powerful move, White annihilates Black's intents.

**15 e5! d×e5 16 f×e5 ♖×e5**

**16... ♜×e5 17 ♜d4+–**

**17 ♖×e5 ♜×e5 18 ♜d4 ♜eg4**

**18... ♜×d3 19 c×d3+–**

**19 h3 e5 20 ♜c5!+–** (Spasskij - Bazan, 1960)

46. **19 ♜b1!**

Knight's move on c4 assures White a big advantage.

**19... ♜×c1 20 ♜×c1 ♜c8 21 ♜a3 ♜×c1 22 ♜×c1 h5**

**22... b5?! 23 ♜c2 a5 24 ♜d2 b4 (24... a4 25. ♜a3+– ) 25.a3!+–**

**23 ♜c4 ♜c8 24 ♜d2 ♜f6**

**24... ♜h6 25 ♜b4**

**25 ♜a5 b6 26 ♜c6±** (Petrosjan - Ivkov, 1982)

47. **23 ♜c3!**

At first sight a modest move, but is instead a very effective one: White takes d rank.

**23... h6 24 ♖e4 ♜ac8 25 ♜d3 ♖e6 26 ♜cd1 ♜e7 27 b3 ♜f8 28 ♜d6 ♖f7 29 f3 c5 30 ♜1d5±** (Lilienthal - Dubinin, 1940)

48. **19 ♖f5!**

Whilst White is a Pawn down, the pathway to equality is through a Queens' tradeoff.

### 19... ♖d6

Wrong 19... ♖xf5? 20 exf5 ; as it does not work 19... ♖d6 20 f4!

20 ♖xe6+ fxe6 21 a3 ♖d7 22 ♖f1 a4 23 ♜e1 ♖a5 24 ♜c2 ♜c8  
25 ♜ac1= (Petrosjan - Keres, 1953)

### 49. 21 g4! ♜e7 22 ♖b4 g6 23 ♖c3! f6 24 g5! f×g5 25 d5!

A sharp five-moves combination rewards White with a decisive advantage, threatening the lethal 26. ♖d4 . Searching for a secure position Black offers a piece, which only loosens White's grip a little.

25... ♜xd5!? 26 cxd5 ♖xd5 27 ♖e3 f4 28 ♖b6 c5 29 ♜e1 ♖c6  
30 ♖xc6 bxc6 31 ♖f6 g4 32 ♖g5 f3 33 gxf3 gxf3 34 ♜e3 ♖f7 35  
♜xe8+ ♖xe8 36 ♖e7+– (Short - Zilber, 1979)

### 50. 35 ♜xd7!

Quality sacrifice is the right path for this purpose. Worse was 35 ♜xc8+ ♖xc8 36 ♜xg7 ♖xa6 even if 35 ♜cc7 ♜xc7 36 ♜xc7 ♜d8

35... ♜xc1 36 ♜xb5 ♜hc8 37 ♜xg7 h6 38 ♜xa7 ♖b8 39 ♜b7 ♖a8  
40 ♜a7+– (Botvinnik - Vidmar, 1947)

### 51. 14 ♖xf6! Only this way!

Worse 14 ♖e3 cxb4! 15 ♖b3 ♜d7! 16 ♖xb4 ♜c5

14... ♖xf6 15 O-O ♜fd8 16 ♜c4± (Petrosjan - Pilnik, 1956)

### 52. 21 ♖h1!+–

This “quiet” move is very effective. Moving the King away from a7-g1 diagonal, White leads his opponent to a truly desperate situation.

### 21... ♖xc3

Threatening ♜b5 or ♜d5.

22 ♖xc3 ♜d7 23 ♖h6 ♜e8 24 ♖xf7+! ♖xf7 25 ♖c4+ ♖f6 26  
♖h4+ ♖f7 27 ♖c4+ ♖f6 28 ♖h4+ ♖f7 29 ♖xd8 ♜xd8 30 ♜xd8  
♜b6 31 ♜xa8 ♜xa8 32 ♜d1 ♜b6 33 ♖e3 ♜f6 34 ♖xb6 axb6 35  
♖g1 and White wins. 1–0 (Nikolaev - Perun, 1986)

### 53. 15 fxe6 fxe6 16 e5! dxe5 17 ♜b3± (with the idea of ♖xf6 and ♜e4).

Game ended after ten moves: 17... ♖e8 18 ♖d3! ♜ab8 19 ♖h3 ♖g6  
20 ♖xg6 hxg6 21 ♖xf6 ♖xf6 22 g5! ♖xg5 23 ♜e4 ♖h6 24 ♜bc5  
♖a7 25 ♜d7 ♜c7 26 ♖xe6 ♖h8 27 ♖xc6! 1–0 (Spasskij - Toluš,  
1958)

54. **13 ♖f1!**

Unexpected and very strong indeed.

Weaker 13 O-O?! since Black can pose a threat on a8-h1 diagonal.

**13... O-O**

13... O-O-O 14 ♜eg5!±

13... h6 14 ♜e5±

**14 h4 b5 15 ♜eg5 h6?!**

15... ♜f6 16 ♜e5 ♙e8 17 f5±

**16 ♙h7+! ♜h8 17 ♙e4+- 17... ♞d6 18 ♜e5 ♜xe5 19 fxe5 ♞d7  
20 ♜xf7 ♜g8 21 ♙g6 1-0** (Bronštejn - Nei, 1962)

55. **23 a4! ♙a6**

23... b4 24 ♜fxe6! ♜xe6 25 ♙xd5 ♜cd8 26 ♙xc4 ♜g7 27 ♜xe6+ ♜xe6  
28 d5 ♜d8 29 ♞d4+-

**24 ♜fxe6! ♜xe6 25 ♙xd5 ♞ad8 26 ♙xe6+ ♜g7 27 axb5 ♙xb5  
28 d5 f4 29 ♞g4 h6 30 ♜h3 1-0** (Petrosjan - Barcza, 1952)

56. If White manages to play 18. ♙e3 , it's all fixed. Therefore

**17... d4! 18 c4 ♞g6! 19 ♞xg6 f×g6!+- 20 ♙d2 ♙g3 21 ♙e1**

21 f3 d3 22 ♙e1 ♞xe1+ 23 ♞xe1 d2 24 ♞d1 ♞e8!+-

**21... d3 22 ♞d1 ♙xf2! 23 ♙xf2 ♞e2 24 ♞xd3 ♞fxf2+ 25 ♜g1  
♞xg2+ 26 ♜f1 ♞ef2+ 27 ♜e1 ♞xb2 0-1** (Honfi - Portisch, 1962)

57. Pawns offensive towards King's side is decisive.

**27 g4! h×g4 28 h×g4 ♜d5 29 g5 ♞d8 30 g6 f×g6 31 f×g6 ♜7f6  
32 ♜e5 ♙d6? 33 ♜xc6!+- 33... bxc6 34 ♞xc6 ♙e5 35 ♙xd5+  
♜xd5 36 ♞xd5 ♞g5+ 37 ♜f1 ♞f6 1-0** (Kavalek - Hug, 1972)

58. **19 ♜b5! ♞c8 20 ♙f4! e5 21 ♙e3 a6 22 ♜c3 ♞b7 23 ♜d5±**

White conquers central d5 and drives the game towards a triumphant endgame.

**23... ♙d8 24 ♞g4 ♜f8**

24... ♜e7? 25 ♜f6+ ♜h8 26 ♜e8+-

**25 ♞d3 ♜a5 26 ♞dc3 ♞xc3 27 ♞xc3 ♜c6 28 ♙g5! ♙a5**

28... f6 29 ♞e6! f×g5 30 ♞f3+ ♙f6 31 ♞xd6 ♜e7 32 ♜xf6 g×f6 33  
♞xf6+ ♜g8 34 ♞e6+ ♜h8 35 ♞xe5+ ♜g8 36 ♞e6+ ♜h8 37 ♞f7+- ;  
28... ♙xg5 29 ♞xg5±

**29 ♞xc6 ♞xc6 30 ♙e7 ♜e8**



30... ♖g8 31 ♙f6+—

**31 ♖xg7 ♚a7 32 ♗f8 ♜d7 33 ♖xf7 ♜c8 34 ♗g8 ♜b7 35 ♖xh7+—**  
(Dorfman - Spassov, 1985)

59. Black defence would be half as painful in a Rooks endgame, thanks to 25... ♜c5. That requires an action of prophylaxis.

**25 ♜f3! ♜d8 26 a3! 26... ♜c7 27.b4!±** (Petrosjan - Bannik, 1958)

60. The main thing is not to lose the plot in the labyrinth of possibilities.

**16 fxe5! f4 17 exd6 fxe3 18 dxe7 ♜xf1 19 ♜xf1 exd2 20 e5! ♙xe5 21 ♙xh7 ♜xh7 22 ♜f8**

This forced variation has led White's passed Pawn to be stronger than a minor piece.

**22... ♙d7 23 ♜d8 ♙a4 24 b3 ♙e8 25 d6 ♙xd6 26 ♜xd6 ♜g7 27 ♜g3 ♙g6 28 ♜xd2 ♜f7 29 ♜d7 ♜c8 30 ♜d8 1-0** (Panno - Hug, 1973)

61. **31 ♜d3!**

Prepares for the a-Pawn's move. On a6, White shall control over b7 which will be the bridgehead to a Black's camp invasion.

**31... ♖g8 32 a4! ♜e6 33 ♜6d5 ♖b7 34 ♖g4 ♖f7 35 ♖e4 ♖b7 36 ♜e3 ♖f7 37 a5! ♖b7**

**37... bxa5 38 ♜xc5 ♜b6 39 ♜xa5 ♜xb3 40 ♜xb3 ♖xb3 41 ♜xa7±**

**38 ♖c4 ♖f7 39 a6!± and White wins 39... ♜6e7 40 ♖e4 ♜e6 41 ♜ed3 ♜6e7 42 ♜d8 ♖e6 43 ♜8d6 ♖f7 44 ♜f2 ♜c7 45 ♜d8 ♜ce7 46 ♖c4 e4 47 ♜xe8+ ♜xe8 48 ♜d7 ♖xc4 49 bxc4 exf3 50 ♜xf3 ♜a8 51 ♜e4 ♜h7 52 ♜d5 ♜g6 53 ♜c6 ♜e8 54 ♜xa7 ♜xe2 55 ♜d7 ♜xh2 56 a7 ♜a2 57 ♜b7 57... ♜f6 58. a8♖ ♜xa8 59. ♜xa8 h5 60. ♜b7 g5 61. ♜xb6 ♜f5 62. ♜xc5 ♜g4 63. ♜g7 1-0** (Lilienthal - Dubinin, 1940)

62. **21... ♜c8!**

And the Knight is well placed. Does not yield anything 21... ♜d1 22 ♜f1 either 21... ♜d2 22 ♜fe2

**22 ♜fe2 b5! 23 ♜a1 ♜b6 24 ♜b3 ♜a4! 25 ♜f2 c5 26 ♜c2 g6 27 fxg6 hxg6 28 ♜c1 c4±** (Alapin - Rubinstein, 1908)

63. **10 dxe5! dxe5 11 ♜d2! ♖e7 12 ♜a4!**

With the idea 13. c5 followed by ♜d2–c4–d6.

**12... c5?**

Blocking White's plan but decisively weakening central light squares.

**13 ♖b1! ♜d8 14 ♖bc3 ♜f8 15 ♜ad1 b6 16 ♜d2 h6 17 ♜fd1 ♙b7  
18 ♜d6±** (Nikolaev - Vlasov, 1989)

64. **26 ♖e1!**

With the idea ♖e1–c2–e3. Weaker 26 ♜e2?! ♜e8+ 27 ♜d3 ♜f7 28 ♜c7+ ♜e7

**26...h5 27 h4!**

Wrong 27 ♖c2?! ♜f7 28 ♜c7+ ♜e6 29 ♜h7? ♜c8! with pressure on the open file.

**27...♖d7**

27... ♜f7 28 ♖f3! g4 29 ♖e1 ♜e6 30 ♖d3 ♜f5 31 g3 ♜e4 32 ♖f4±

**28 ♜c7 ♜f7 29 ♖f3 g4 30 ♖e1 f5 31 ♖d3±** (Botvinnik - Alechine, 1938)

65. White has got an extra piece, but the threatening ♜g3 is very annoying. Problems are all sorted out thanks to

**43 ♜h2!+–** (Karpov - Yusupov, 1986)

66. Black is about to play 23...e4, trading Queens off and getting control of e5 for his Knight.

**23 e4! Demolishing opponent's plans. 23...fxe4**

23... f4 24 ♙h3

**24 ♖d2 ♜g7 25 ♖xe4±** (Petrosjan - Bronštejn, 1956)

67. As a result of a prompt Pawns' onslaught with g2–g4, h2–h4, Black's King would run away on queenside. Correct

**21 ♜e3! ♜b7 22 ♜g3 ♜h8**

22... ♜f8 23 ♜g4!

**23 ♙e3 ♜g8 24 ♖f3 ♖df8 25 ♖h4 ♜b8 26 ♖g6 ♖xg6 27 fxg6+–** setting up the Bishop for a sacrifice on h6 followed by a quick victory (Toshkov - Kosten, 1987)

68. White has enough compensation for the missing Queen; a sloppy placement of pieces is his only misfortune. It's very important to get the "lost" Knight "back home" on d7. If White were in time to play 29. a5 followed by ♖d7–b6–c4, he could strengthen his position. However, Black tears his plans apart.

**29...a5!**

Now White is in a sort of Zugzwang.

**30 f4 f6 31 c7 ♖c2 32 ♘f1 ♖xc7 33 ♘c4**

**33 ♘f3 ♘f7!** followed by ... ♘e7+-

**33... ♖xc4 34 ♙xc4 ♜f3+ 35 ♘e1 ♜c3+ 0-1** (Smyslov - Gufeld, 1967)

**69. 15... ♘xe4!**

Now central Pawns are a strong threat.

**16 ♙xe4 f5 17 ♙c2 e4 18 ♘d4 ♘xd5 19 ♘e2 ♘xc3 20 ♘xc3 ♙xc3 21 ♖b1 c5 22 ♙b2 ♙xb2 23 ♖xb2 d5 24 ♜c1 d4+ (Geller - Eingorn, 1985)**

**70. Needed to play 18... ♙a4!** blocking off the a3-Pawn with better chances to gain a winning defence. However, this is what happened in the game

**18... ♜e7? 19 a4 ♙xa4 20 ♖a1± and White quickly won 20... b5 21. ♙a3 ♜d7 22. ♖f2 ♖b7 23. ♖af1 ♜d8 24. ♜d1! ♖h6 25. ♙c1 ♖h7 26. ♙xe6! 1-0** (Stein - Petrosjan, 1961)

**71. 16... ♖xe3!**

Worse 16... h6? **17 ♙d4 ♘e6 18 ♙xg7! ♘xg7 19 ♜xh6 f5 20 ♖d3** with attack.

Black wipes out White's "key" man. **17 fxe3 ♜e7 18 ♙c4 h6 19 ♖he1 ♙e6 20 ♜h4 ♖e8 21 ♜d4 a6 22 ♙d5 c5! 23 ♜d3 ♙xd5 24 ♜xd5 ♘e4=** (Kupreichik - Yusupov, 1980)

**72. 13... ♖e8!**

Worse the immediate **13... b5 14 ♜b4** followed by a2-a4!

**14 O-O b5 15 ♜d1**

**15 ♜b4? ♙f8!**

**15... ♖c8+ (Mochalov - Dolmatov, 1982)**

**73. 10 ♙f4!**

Trading dark-squared Bishops off, White takes control over all opponent's black squares.

**10... ♙xf4**

**10... ♙e7? 11 ♘b5! axb5 12 ♙c7+-**

**11 gxf4 O-O 12 ♘a4 ♘b6 13 ♘c5 ♜d6 14 ♘e5±** (Taimanov - Lisitsin, 1952)

74. **14 ♖he1!**

Could be working out the simple 14 ♖ac1, but that in the game is the ideal move. In this situation, Black's concrete possibilities are linked to f7-f6 and White, according to the prophylaxis rule, takes control of the file and central e5 square.

**14... a6**

14... f6?! 15 exf6 ♜xf6 16 ♖e3±

**15 ♖ac1**

And now it is possible to get control back of the c-file.

**15... ♜e7 16 ♜a4 h6 17 ♖e2 ♖a7 18 ♜b4 ♖b7 19 ♜c5! ♖a7 20 ♜d3 g6 21 ♖ec2!±** (Nikolaev - Ushakov, 1988)

75. **24 ♙f1!**

A good, precautionary move against the manoeuvre 24... ♜f6-d7-c5.

**24... ♖cb8**

24... ♜d7 25 ♙h3! ♖xc6 26 dxc6 ♜c5 27 ♜d5 e 28. c7 with advantage.

**25 ♙h3±** (Petrosjan - Pilnik, 1956)

76. White takes advantage of the Bishops' couple which opens up the play.

**24 h6! g×h6**

24... ♖×h6 25 a4! ♜a7 (25... b×a4 26. ♖b8+- ) 26. ♖b6+-

**25 ♙e5 ♜g7 26 a4! b×a4 27 c4! ♜e7**

27... d×c4 28 ♙×f6+ ♜×f6 29 ♖e5+-

**28 c×d5 ♜exd5 29 ♜h1 ♖c8 30 ♖g1+ ♜h7 31 ♖a3 ♖g8 32 e4+-**  
(Alechine - Euwe, 1938)

77. Black's pieces shortly thereafter will be creating dangerous threats 17... ♖ab8 18.b3 ♙b3! , for this reason

**17 ♖g5! ♖ab8 18 b3 h6 19 ♖×f6 g×f6 20 ♖d3! f5 21 exf5 ♙×f5 22 ♖c3 ♙d7 23 ♖d1±** (Botvinnik - Smyslov, 1943)

78. White threatens an unpleasant move ♙f3, but an interesting Queen's manoeuvre rescues Black:

**18... ♖f8! 19 ♖f3 ♖h8! 20 ♙g2 ♖h4!** with nice play. (Karpov - Kasparov, 1985)

79. Black threatens to get counterplay over queenside with 31... b5.

**31 ♖h4! e6**

Now, after 31...b5 follows 32.♖g3! bxc4 33.♖hg4 ♕f7 34.♕xf7 ♖xf7 35.♖g8 cxb3 36.♖3g7#

**32 fx e6 ♕xe6 33 ♕d1 ♕g8 34 ♖xd6±** (Botvinnik - Lombardy, 1969)

#### 80. 1...h5!

Preventing White making a defensive manoeuvre ♖e5–g4–e3.

**2 ♖d2 f6 3 ♖f3 ♖c4! 4 b3 ♖c6 5 h4 g4 6 ♖e1 ♖c7! 7 ♖xh5 ♖g6** 0–1 (Zakharov - Dvoretzky, 1978)

#### 81. 17 ♖fc1!

Precisely with this Rook. White's plan: e2–e3, ♕g2–f1 bringing the inactive Bishop in the game and ♖a1–a3–c3 getting total control of the c-file.

**17...♕b5 18 e3 ♖fc8 19 ♖a3! ♖c7 20 ♖c3 ♖e7 21 ♕f1 ♕xf1 22 ♖xf1 ♖bc8 23 ♖b3 ♖e8** and White won with a beautiful combination: **24 ♖xb7!! ♖xb7 25 ♖xb7! ♖xb7 26 ♖xc8 ♖f8 27 ♖b8! ♖e7 28 ♖xa8 g6 29 ♖cc8 ♖g7 30 ♖xe8 ♖c7 31 ♖ec8 ♖b7 32 ♖ab8 ♖a7 33 ♖h8 ♖e7 34 ♖bg8 ♖h6 35 ♖xg6 ♖h5 36 ♖g3 ♖h4 37 ♖f3 ♖h5 38 ♖hg8** 1–0 (Taimanov - Lisitsin, 1952)

#### 82. Black's threat is e5–e4 that White wards off with an unexpected move **15 ♖d3!**

After **15...♖fc8 16 ♖fc1 ♖xd3 17 cxd3 g6 18 ♖c3 ♖xc3 19 bxc3 ♖c8 20 c4 e4 21 dxe4 ♖xc4 22 ♖d2 ♖c2 23 ♕d1 ♖c3 24 ♖f1 ♖c5 25 ♕d4 ♖d3 26 ♕xc5 dxc5 27 ♖e2** Black sacrifices the quality: **27...♖xd2+ 28 ♖xd2 ♖xe4+ 29 ♖c2 ♖d6 30 ♕e2**, even though White turns his advantage into victory. (Smyslov - Tal', 1959)

#### 83. 21 ♖ab1!

Blocking Black's vital manoeuvre ♖c6–b4–d5 setting up a Rook's shift to the third rank, nearby the Queen.

**21...♖d5?! 22 ♖f4 ♖d8 23 ♖b3! ♖c8 24 h4! ♖c7 25 ♖f3 ♖f8 26 ♕xf8 ♖xf8 27 d5! exd5 28 ♖xd5+–** and White won. (Yusupov - Wiel, 1982)

#### 84. The pathway to victory passes through a man's positional sacrifice.

**25 ♖bxd6! ♖xd6 26 ♖xe5+ ♖xe5 27 ♖xe5 ♕b5 28 ♖c7 ♕xe2+ 29 ♖xe2 ♖ae8 30 ♖f7+ ♖xf7 31 ♖xf7 ♖g7 32 ♖cc7 ♖xf7 33 ♖xf7 ♖g8 34 ♖xb7 ♖xg2 35 d6 ♖e3 36 ♖xa7 ♖d8 37 e5+–** (Bukic - Portisch, 1978)

85. **14... ♖c7!**

Preventing b2–b4 and setting up ♜c6

**15 ♙g5**

15 b4? cxb4 16 axb4 ♖xc4

**15... h6 16 ♙xf6 ♙xf6 17 ♖c2 ♜c6 18 ♜e4 ♙e7** with nice play.  
(Inkiov - Gurevič, 1985)

86. **15... ♞xe3!**

Giving away wood, Black achieves a convenient Pawns structure

**16 fxe3 d6 17 ♖d4 ♜d7!**

After 17... ♖e7?! White can make a counter-sacrifice: 18. ♞xf6!

**18 ♞f4**

18 a4 a5!

**18... ♖e7 19 ♞af1 ♜e5** with good compensation. (Razuvaev - Tiviakov, 1993)

87. An unexpected Queen's manoeuvre grants Black control over dark squares.

**29... ♖d8! 30 ♖g4 ♖b8! 31 ♙g2 ♖a7! 32 ♞fe1 ♖c5** (Janowski - Rubinstein, 1907)

88. Correct **11... ♖e7!**

Played in the game was 11... ♞e8?! 12 O-O ♙f5! 13 ♙xf5? (necessary 13. ♜c1! ♙xd3 14. ♜xd3 ♞e2 15. ♜a3 with chances of defence) 13... ♞xe2 (Kovac - Korčnoj, 1969)

**12 O-O ♙f5! 13 ♜c1**

or 13 ♙xf5 ♖xe2

**13... ♙xd3 14 ♜xd3 ♖e2**

89. An “unexpected” exchange gives White the advantage.

**24 ♙xc6! ♙xc6 25 ♞c1 ♙d7 26 ♞dc2 e6?! 27 ♙f1 ♙f6 28 ♙e1 d5?! (as well as setting up Pawns into Bishop's colour-alike squares. Even though there are other variations, White has the upper hand anyway) 29 ♞xc8 ♞xc8 30 ♞xc8 ♙xc8 31 ♙d2± in the following attack, white Knight is stronger than black Bishop. 31... ♙d7 32 ♙c3 ♙e5 33 ♜c2 ♙d6 34 ♙b4 ♙c6 35 ♜d4 ♙b6 36 f4 f6 37 a4 bxa4 38 bxa4 e5 39 fxe5 fxe5 40 ♜f3 e4 41 a5 ♙a6 42 ♜d4 e3 43 ♜c2 ♙b5 44 ♜xe3 ♙xe2 45 ♜xd5 ♙b7 46 ♜f6 h5 47 h4 ♙c6 48 ♙c3 1–0 (Azmaiparashvili - Yurtaev, 1982)**

90. **21 ♖d2!** (threatening 22. ♖a5 with double attack on e5 and a7)

**21... ♙e6** 21... ♙c6 22 ♘h4! ♘xe4 (22... ♙xe4 23. ♖e3!+- ) 23. ♘hf5+ gxf5 24. ♘xf5+ ♙g6 25. ♖xh6 ♙xf5 26. g4#

**22 ♙xe6 ♖xe6 23 ♖a5! ♘c4 24 ♖xa7 ♘xb2 25 ♜xc8 ♜xc8**

25... ♖xc8 26 ♘xe5

**26 ♖xb7+-** (Alechine - Capablanca, 1927)

91. All Black's pieces are badly placed but the Queen. Also, after a Queen's tradeoff, a6-Pawn would not be safe any more. White brilliantly solves this exchange dilemma.

**27 ♖f1! ♘c8 28 ♘d2! ♖b4 29 ♖c4! ♖xc4 30 ♘xc4 ♜ab8 31 ♘d2! ♜c7 32 ♜xa6 ♜c2 33 ♜6a2±** (Rubinstein - Duras, 1911)

92. White's main threat is 10. ♙f3! with annoying pressure against the queenside, therefore

**9... ♙g4! 10 ♙d3!** and now not **10... e5?!**

but 10... ♙d7!

**11 ♘df5 g6 12 ♘e3±** (Thomas - Nimzowitsch, 1930)

93. **17 ♙xc5!**

Trading opponent's "good" man, only the "bad" ones are left.

**17... dxc5 18 ♙b5!**

**18... ♙b7**

This was the only way! Otherwise, shifting the Knight to a key-square on d6, Black can tenaciously withstand.

18... ♙a6 19 ♙xa6 ♜xa6 20 ♘c4 ♘e8 21 ♘e2 ♘d6 22 ♖d3 ♘xc4 23 ♖xc4±

**19 ♘e2 ♘e8 20 ♙xe8 ♜xe8 21 ♘c4±** (Petrosjan - Schweber, 1962)

94. Correct **26 ♖h5!±** followed by g3-g4-g5.

Worse 26 g4?! ♙f7! 27 g5 ♙e7 28 ♜f3 ♙d7 29 ♜g3 ♙c8 30 gxf6 gxf6 and shifting the King to the queenside, Black can easily "breathe a sigh of relief". (Romanovsky - Vilner, 1927)

95. White gets a decisive advantage by activating the Queen.

**30 ♖d1! b6 31 ♖g4 ♙g7 32 ♙e3 ♙f7 33 ♖c8 ♖e7 34 ♙h7!+-** (Karpov - Smeykal, 1978)

96. **23 ♖b5!**

is the best move. The one played in the match Tal' - Ribli (1980) was worse

23 ♘d2? ♘c6 24 ♘e4 ♘a5 25 ♖b5 ♘xc4 26 ♜c6 (26. ♜d7 ♘xe3 ) 26... ♜xc6 27. ♖xc6 ♜d8=

neither 23 ♖d1? ♘c6 24 ♜d7 ♜d8

nor 23 ♖a4 ♘f8

**23... a6**

23... ♘f8? 24 ♜xf6! ♖xf6 25 ♖d5+ ♔h8 26 ♖xa8+-

**24 ♖d5 ♖xd5 25 cxd5±**

97. Correct **15 ♔h1!**, shifting the Knight on f3, setting free the e-line, and raising the pressure on the weak e6-Pawn. (Gelfand - Short, 1992)

98. **25 ♘e2! ♔a4 26 ♜c1 ♜fd8 27 ♘c3 ♔c6 28 ♜cd1 h6 29 ♖e3** doubling the Rooks on the d-line, White gets a decisive advantage. (Spasskij - Averbakh, 1963)

99. Black managed to preserve his kingside, but the outcome is settled by shifting the white Queen on the other side of the board.

**32 ♔b1! ♔h8 33 ♖d3 ♜g7 34 ♖b3 ♜b6 35 ♖c3 ♜g8 36 ♖c8+** 1-0 (Smyslov - Simagin, 1967)

100. **50 ♔f1!**

Relocating the King to the queenside, planning to break the Pawns structure.

**50... ♜f8 51 ♔e1 ♖c7 52 ♔d1 ♜f6 53 ♔c2 ♖d8 54 f3 ♜ff7 55 ♖g1 ♖c7 56 ♔b2 ♜d8 57 ♖d1 ♜fd7 58 g4±** (Petrosjan - Ljubojević, 1974)

101. **16 g3!**

White found the ideal position for his light-squared Bishop.

**16... ♜c7 17 ♔h3 ♘d7 18 ♜c1! ♜xc1 19 ♔xc1 ♘b6 20 ♔c2 ♔f8** 20... ♘c4 21 ♔c1

**21 b3! ♔e8 22 a4 ♔d8 23 a5 ♘c8 24 ♔xc8+-** and White won: **24... ♔xc8 25 ♔xa7 e6 26 ♔d3 exd5 27 exd5 ♔b2 28 ♔c4 ♔c1 29 ♔b5 ♔c7 30 ♔b6+ ♔d7 31 a6 bxa6+ 32 ♔xa6 ♔d2 33 ♔a5** 1-0 (Polugaevsky - Ostojic, 1969)



102. **15... ♕f6! 16 g3 g5 17 h×g5 ♕×g5 18 ♕×g5 ♖×g5 19 ♚d3?**  
 (19 ♖g2) **19... ♖c5 20 ♚e3 ♚d8 21 ♚d1 ♚d4** (Razuvaev - Azmaiparashvili, 1985)

103. Correct **28 g4!** which would have given White chances to defend successfully.

In the game was played 28 ♖f1? h5! (now kingside white-Pawns are paralysed, it paves the way to the center for the black-King.) 29. ♖e1 g5 30. ♚c2 ♚a1 31. ♖e2 ♖g6 32. ♖f3 ♖f5 33. ♖d2 g4!+ 34. ♖f1 ♕d4 35. ♖d2 ♚g1 36. ♖b3 ♕e5 37. ♖d2 ♚×g2 38. ♖f1 ♚h2 39. ♖g1 ♚h3 40. ♖f1 h4 41. ♖g2 h×g3 42. f×g3 ♖e4 43. ♚f2 f6 44. ♚a2 ♚h8! 0-1 (Uhlmann - Geller, 1970)

104. After **11... ♕xe5! 12 ♕xe5 ♖g6 13 ♕g3 ♖d7 14 ♖d2 ♖f6 15 ♖f3 c6 16 ♖b3 ♖b6! 17 ♖×b6 a×b6** thanks to his opponent's help, Black achieved some endgame advantage which eventually turned into victory. (Gurevič - Short, 1990)

105. **19 g4 f×g4**

19... e6 20 g×f5 e×f5 21 ♕d5+ ♖h8 22 ♚f3 (threatening ♖g6) 22... ♖e7? 23. ♖c4+-

**20 f5 ♖e5**

20... h5 21 ♖g6

**21 ♖×g4 ♖×g4**

21... ♖d7 22 ♕d5 ♕c6 23 ♕×c6 ♖×c6 24 f6! e×f6 25 ♖f5 e 26. ♖g2

**22 ♖×g4 ♖f7 23 ♕d5 ♖a6**

23... ♖f8 24 ♖h5 ♖h6 25 ♕e3 ♕e8 26 ♖g6+! h×g6 27 f×g6+-

and now immediately wins **24 ♕d4! c×d4 25 ♚g1** with forced check-mate. (Smyslov - Larsen, 1958)

106. **24 ♖b1!**

followed by the Knight's shift on c4.

**24... ♖xe3+ 25 ♚xe3 ♖d7 26 ♖a3 b5?! 27 a×b6 ♖×b6 28 ♚c3 ♖d7 29 ♚c5 ♚fe8 30 ♖c4 ♖×c4 31 ♖×c4** (Rashkovsky - Savon, 1982)

107. Black-Pawns center looks rather ominous, but...

**22 b4! c×b4 23 ♖b3 ♕b6 24 ♕×c6!** variation's gist.

**24... b×c6 25 a×b4 a6 26 ♖f3** now central black-Pawns are clearly a weak spot.

26...e4 27 c5 ♖c7 28 ♜fxd4± and White wins: 28...♞f7 29 ♜d2 ♜d7 30 ♜b2 ♞g8 31 ♜a5 ♜xa5 32 bxa5 ♜b8 33 ♜a1 ♜fe8 34 ♜de2 ♞h5 35 ♞d2 ♞f7 36 h4 exd3 37 ♞xd3 f4 38 ♜f3 ♜xe2 39 ♞xe2 ♞xc5 40 ♜e5+ ♞f8 41 ♜xd7+ ♜xd7 1-0 (Petrosjan - Korčnoj, 1971)

108. White threatens to take on d5 and ♜fe1, followed by e5-e6. Defence is made up of an unexpected Queen's sacrifice.

20...♜xe5! 21 ♜xc6 ♜xf4 22 ♞f6 ♜xh6 23 ♜xd7 ♜xd7+ as result of this forced combination, Black trades the Queen off for only two men, but now his position looks much more promising; in particular, d-Pawn is very dangerous. In the following fight, White made a number of poor moves and eventually lost the game:

24 ♜fe1 ♜f8 25 h4 ♜ad8 26 h5 d4 27 hxg6 hxg6 28 ♜d3 ♜a6 29 ♜ed1?! ♜xd3 30 ♜xd3 ♜c8+...0-1 (Filip - Korčnoj, 1954)

109. White is about to play 20. h5 followed by 21. ♞g5. Black neutralises the threat.

19...♜d8!

Not 19...♜e5? 20 ♞d4±

20 h5 ♜f7! 21 hxg6 hxg6 22 ♜e3 ♞g7 (Stein - Kapengut, 1971)

110. 16 ♞a4!

Right square for the Queen is g4.

After 16...♞d8 17 ♜c2 ♞f8

wrong 17...O-O? 18.♞g4 ♞h8 19.♞h5 f5 20.♜xh6 gxh6 21.♞xh6 ♞g8 22.♞xe6+

18 ♜fc1 ♜b6 19 ♞g4 with dangerous attack. (Korčnoj - Udovcic, 1967)

111. Black can materialise his obvious advantage with

30...a5!-+

and White's position is defenceless: 31 ♞h1 ♞f8 32 ♜f1 ♞xe3 33 ♞h3 ♞g7 34 g3 ♞d4 35 g4 a4 36 ♜d1 ♜e3 37 ♞g2 ♜d3 38 ♜e2 ♜d2 39 bxa4 ♞e5 (Spasskij - Larsen, 1968)

112. Right 9...b5!, getting room on the queenside.

After 10 h3 a5 11 ♜d1 ♞c7 12 ♜e3 ♜a6 13 ♞e1?! ♜ad8 14 ♜xc5 ♜xc5 15 ♞e3 ♜e6 16 ♜f1 ♜b7! 17 a3 b4 18 axb4 axb4 19 ♜a4 c5 20 ♜d2 ♜d4 Black has the upper hand. (Chernoivanov - Nikolaev, 1996)

### 113. 14 g3!

Followed by ♖h4 and f2–f4. It can be done right now 14 ♖h4.

After 14... ♖ac8 15 ♖h4 ♜d8? (more solid 15... ♖f5!?) 16 f4 ♖f5 17 ♖xf5 exf5 18 ♜f3 ♜e6 19 ♜fb1 b6 20 ♜g2 ♜a7 21 ♜b5 ♜d7 22 g4!+– and White wins. (Unzicker - Botvinnik, 1961)

### 114. 21... ♜b6!

Black is reorganising with the idea ♜d7 and ♜d6, defending on the way b7-Pawn and planning for ♜b4.

Could not be done immediately 21... ♜d7? due to 22. ♜a4

22 ♜e1 ♜d7 23 ♜cd3 ♜d6 24 ♜e4 ♜c6 25 ♜f4

25 ♜xc6? ♖xc6 26 d5 ♖b4+

25... ♖d5 26 ♜d2 ♜b6 27 ♜xd5?! ♜xd5+ (Korčnoj - Karpov, 1981)

### 115. 22... ♜e5!

Maximising the potential of all pieces. The King has safeguarded d6-Pawn and now is threatening 23... ♜g7 grabbing the Queen.

23 f4+ ♜xf4 24 ♜e2

24 ♜xd6+ ♜e5

24... ♜e5 25 ♜hf1 fxg4 26 b4 ♜g7! 27 bxa5 ♜xb8 28 ♜ab1 f5+ e il Nero ha vinto 29 a6 f4 30 ♜c6 f3+ 31 ♜f2 ♜xb1 32 ♜xb1 ♜f4 33 ♜b4 ♜c3 34 ♜c4 ♜a5 35 ♜f1 ♜b6 36 ♜b7 h5 37 ♜c6 e3 38 ♜c4+ ♜g5 0–1 (Ivanovic - Sveshnikov, 1976)

### 116. 26... h5!

Blockading white Pawns on the kingside, leaving them in a position completely without prospects.

After 27 ♖d3 h4 28 ♜h2 ♖e7 29 ♜f4 ♖f5 Black has some advantage, which will be certainly turned into a victory: 30 ♜d2 b6 31 ♜e2 c5 32 ♜e3 b4 33 axb4 c4 34 ♜c3 ♖d6 35 ♜e1 ♜a4 36 ♖d2 ♜xb4 37 ♜a1 ♜xb2 38 ♜a7+ ♜e6 39 ♜xg7 b5 40 ♜f2 b4 41 ♜c1 c3 42 ♜xh4 ♖f5 0–1 (Gurevič - Short, 1990)

### 117. 19 ♜c2!

Does not give anything the rushed 19 ♜xf6? ♜xf6 20 ♖xd5 ♖xd5 21 ♜xd5 ♜xb2 22 ♜b1 ♜f6

19... d4 20 ♖a4

Threatening 20 ♜xf6 ♜xf6 21 ♖a4 taking the c5-Pawn.

20... ♜a5 21 ♜xf6 gxf6 22 ♜ad1± (Dorfman - Romanishin, 1981)

118. Taking advantage of a better Black's position ("bad" Knight against "bad" Bishop and a better Pawns structure) requires shifting the King to a safer spot.

**22... ♖f8! 23 ♔g5 ♕e8 24 ♖ac1 ♖d7 25 h5 gxh5 26 ♖xh5 ♖g8 27 ♖h7 ♕c8 e 28... ♖b7 with upper hand. (Corral - Petrosjan, 1969)**

119. **20... ♖a6!**

Taking control of the white squares.

**21 ♖f2**

After the Queen's tradeoff, endgame is favourable to Black

**21... ♖d3 22 ♖e1 ♖g6 23 ♖c2 in fact... 23... ♖xc2+ 24 ♖xc2 b5 25 ♖fc1 ♖d7 26 ♖e1 b4 27 axb4 axb4 28 ♖d2 ♖a8 29 ♖d3 ♖hb8± (Vasiukov - Suetin, 1955)**

120. **26 ♖d2!**

Setting up the Bishop's shift to f3, strengthening the pressure on d5-Pawn.

**26... a5 27 ♖d1! ♖ad8 28 ♖f3± (Gligorić - Alexander, 1957)**

121. It seems that Black could comfortably set up his pieces: ♖ac8, ♖fe8, ♖f6-e4, with favourable play. However...

**17 h4!**

White's possibilities lie on the kingside. After **17... ♖ac8 18 ♖d3 ♖c4?! (better 18... ♖f6 19 ♖g5 ♖fe8)**

**19 ♖g5 ♖f6 20 g3 ♖e8 21 ♖xf6 gxf6 22 h5! ♖g7 23 ♖g2** Black has severe unresolved problems: **23... ♖d2 24 ♖h1 ♖b4 25 hxg6 fxg6 26 ♖h4! ♖g5 27 ♖xd5 ♖c7 28 ♖h2 ♖e1**

**28... ♖e3 29 ♖ah1!! ♖xd3 30 ♖h7+ ♖f8 31 ♖h8+ ♖e7 32 ♖h7+ ♖d6 33 ♖d8+ ♖d7 34 ♖dxd7#**

**29 ♖xe1 ♖xe1 30 ♖h1 ♖b4 31 b3 ♖d7 32 ♖c4** White is a Pawn up and a threatening attack, strengthened by the presence of opposite colors Bishops on the board.

**32... ♖d2 33 ♖e4! ♖a5 34 ♖h8! ♖d8 35 ♖xd8 ♖xd8 36 ♖xb7+ ♖h8 37 ♖xa7** and White, some move after, wins. (Flohr - Furman, 1948)

122. **17... h5! 18 ♖3h2 hxg4 19 hxg4 ♖h7 20 ♖g3 ♖g5!±**

After the darked-squared Bishops tradeoff f4, g5 and h4 squares will be weakened. (Rabinovich - Flohr, 1939)

123. **29 ♖a5!+- 29... ♜g8**

After 29... bxa5 30 bxa5 the unstoppable Pawn is heading to a Queen's promotion.

**30 ♖b7 ♜e7 31 ♜c8 g5 32 ♖xd8+ ♜xd8 33 ♜xc7 ♜b8**

And now everything is decided by a beautiful Bishop manoeuvre.

**34 ♜f1! h6 35 g3** (threatening 36. ♜h3! )

**35... g4?! 36 f×g4 ♜d8 37 ♜×b6 ♖xe4 38 ♜a7!** 1-0 (Taimanov - Kristinsson, 1956)

124. **16 ♜fc1!** With this very Rook.

And now threatening c3-c4 followed by ♖c3-d5.

**16... f5**

If 16... b5 then 17. a4 a6

(or 17... bxa4 18. ♜xa4 a5 19. ♜ca1! followed b2-b4)

18. ♜d1! ♜fd8 (18... ♜ad8 19. a×b5 a×b5 20. ♜a7!± ; 18... ♜b3 19. ♜×d6 ♜×d6 20. ♜×d6 ♜xa4 21. ♖c1± ) 19. a×b5 a×b5 20. ♜xa8 ♜xa8 21. ♜×d6

**17 c4 f×e4 18 ♖c3 ♖f5**

18... ♜xc4 19 ♖xe4 d5 20 ♖g5!±

**19 ♖xe4 ♖xe3 20 ♜xe3 h6 21 ♜d1 ♜fd8 22 ♜ac1 ♜ac8 23 b3 b6 24 ♖c3! ♜e7 25 ♜d5!±** (Smyslov - Denker, 1946)

125. A Pawn sacrifice's perspective has given White a threatening initiative.

**21 ♖b6! ♖×b6 22 ♜xe6 f×e6 23 a×b6 ♜×b6 24 ♖e4±** (Geller - Littlewood, 1983)

126. **30 a4! bxa4 31 ♜c1! ♜f7 32 ♜a3**

Thanks to a Bishop's manoeuvre, Black is seriously in trouble. Now White is better prepared for the next tactict "quarrel".

**32... ♜xc2 33 ♜c1 ♜f5 34 ♜h3! ♖e4**

34... ♖b5? 35 ♖e5 ♜×h3 36 ♖×f7 ♖g6 37 ♜f1+-

**35 ♖e5 ♜f2+ 36 ♜×f2 ♜xf2**

36... ♖×f2 37 ♖×f7 ♖×h3+ 38 ♖g2 g4 39 ♜b1+-

**37 ♖xd7 ♜a2 38 ♜c5 ♖d2 39 ♜g2 a3 40 ♖f8+ ♖h6?**

Stronger 40... ♖g8! 41 ♖×e6 ♖b3 42 ♜f1 ♜×g2+ 43 ♖×g2 a2 44 ♖c7 a1 ♜ 45 ♜xa1 ♖xa1 46 ♖xd5±

**41 ♜e1+- 41... e5 42 d×e5 g4 43 e6 ♖f3+ 44 ♜×f3 g×f3 45 ♖f1** 1-0 (Ponomarev - Ivanchuk, 2002)

127. **21 ♖hb1! ♚ab8?!**

Better was 21...f6!? preventing white Bishop's strenghtening.

**22 ♙c5 ♖hc8 23 ♙d6 ♖b7 24 a4! ♜d8 25 axb5 axb5 26 ♜d2 f6 27 d4±** (Spasskij - Ljubojević, 1979)

128. **19 g5! ♜e8 20 e4! dxe4 21 d5! f5**

21...exd5 22 ♜xd5 ♞e6 23 ♖xc8 ♖xc8 24 ♞xe4 ♞xe4 25 ♙xe4±

**22 gx f6 ♜x f6 23 ♙e3! ♞d6 24 ♜xe4 ♜xe4 25 ♖xc8 ♖xc8 26 ♙xe4 e5 27 b3 b5 28 ♞g4±** (Opochensky - Ivkov, 1948)

129. **29... ♞g5! 30 ♞xg5 fxg5**

Dark squares in the White's camp are desperately weak.

**31 ♖gf1 ♜ge8 32 ♙e2 ♖xf2 33 ♖xf2 ♜g7 34 h3 ♜f6 35 ♙f3 ♙e8!** with the idea of shifting the Knight on e5.

**36 ♖e2 ♜d7 37 ♖d2 ♜e5+** (Euwe - Pilnik, 1950)

130. **13 e5!**

The only option!

With 13 ♖ad1 White would have lingered too much and after 13... ♜c6 Black could get a better position (rearranging his men: ♖fe8, ♖e7, a6, ♞h8!, ♖ae8). Taking advantage of space and development, White opens up the center in time.

**13...dxe5 14 ♙xe5 ♜e4!?** 14... ♜c6 15 ♜xc6 ♙xc6 (15... bxc6 16. ♖ad1± ) 16. ♞xd8 ♖axd8 17. ♙xc7±

**15 ♜xe4 ♙xe5 16 ♜f3 ♙g7 17 ♖ad1 ♞c8 18 ♙c4 ♙e8**

White clearly has the upper hand, which turns into victory.

**19 ♜eg5+! hxg5 20 ♜xg5+ ♜g8 21 ♞f4 ♜d7 22 ♖xd7! ♙xd7 23 ♙xf7+!** 1-0 (Tal' - Petrosjan, 1974)

131. **14 ♜e1!**

With the idea ♜e1-d3-f4. After

**14... ♜b8 15 ♜d3 ♜d7 16 ♜f4 ♜b6 17 a4! ♙g5**

**17... a5 18 ♞d2±**

**18 ♙d2 ♞d6 19 a5 ♜d7 20 ♜xd5! ♙xd2 21 ♞xd2 ♖ab8 22 ♖fd1 ♜f6 23 ♜xf6+ ♞xf6 24 ♙xb7 ♖xb7 25 ♖xc5 ♖xb3 26 ♞d6!+-** White wins. (Nikolaev - Tichomirov, 2000)

132. White-Pawns center looks rather ominous, but...

**33... f5! 34 exf6** there are not other options.

Se 34 ♖c2, allora 34... ♕f8! 35. ♖xf8 ♜xc3!

**34... ♖xf6 35 ♖xg6 ♜g4 36 ♜d3?**

Should have played 36 ♜xg4 hxg4 37 ♖xe8 ♜xe8=

**36... ♜g8 37 ♖e4 ♜ce8 38 ♖f3 ♜xf4 39 ♖e2**

39 ♖xh5 ♜xf1+! 40 ♜xf1 ♖xc3±

**39... ♜h4** and Black gradually takes advantage of his material superiority. (Botvinnik - Tal', 1961)

133. White wins with an unexpected Rook's maneuver.

**39 ♜b3! ♜d8 40 ♜b6 ♜e7 41 ♜d6! ♜dd7 42 ♜h5** 1-0 (Lobron - Spraggett, 1985)

134. **36... f6!**

A thematic weakening. After this unstoppable move g-file opens up and a new kingside's weakness (g3-Pawn) adds up to that already in the queenside (passed a3-Pawn).

**37 exf6 gxf6 38 ♖a2 e5 39 ♜c1 ♜g8! 40 ♜g1 ♜g4 41 ♖c3 ♖xc3 42 ♖xc3 ♖d6 43 ♖e1 exd4 44 exd4 f5! 45 ♖f2 f4 46 gxf4 ♜xg1 47 ♖xg1 ♖xf4 48 ♖f2 ♖c1** 0-1 (Vasiukov - Suetin, 1955)

135. **5... ♖b4+!**

Getting a favourable setup of the pieces.

After **6 c3 ♖a5 7 ♖c4 ♜e7 8 ♜f3 d6 9 ♖d2 ♖f6 10 h3 O-O 11 ♖e2 ♜e8 12 ♖d3 ♖f5! 13 ♖g3** Black's pressure on e4 ends up with **13... ♖xe4! 14 ♖gxe4 ♖xe4 15 ♖xe4 d5 16 ♖xd5 ♜xe3+ 17 ♜xe3 ♜xe3+ 18 ♖d1 ♜d8±** (Ravinsky - Romanovsky, 1926)

136. **17 ♖b5!**

Starting the "hunt" for the black Queen.

**17... c6 18 dxc6 bxc6 19 ♖g5 ♜h5 20 h4 cxb5 21 g4!+-** (Kholmov - Beliavsky, 1976)

137. **32 c4!**

Pawn sacrifice to seize white squares.

**32... bxc4** really forced, since White is threatening 33.c5!

**33 bxc4 ♖xc4 34 ♜c3 ♜b5 35 ♖b3 ♜b7 36 ♜dc1 ♖f7 37 ♜c2 ♜e8**

37... ♖xb3 38 ♜xb3 ♞d7 39 ♜xb7 ♞xb7 40 ♜b1 ♞d7 41 ♞c4±

38 ♖xf7 ♞xf7 39 ♜c7 ♜xc7 40 ♞xc7 ♜f8 41 ♜c6 ♞e6 42 ♜xa6±  
(Smyslov - Panov, 1942)

138. 44 e5!

After breaking the Pawns structure, “bad” Bishop becomes “good”.

44... dxe5

If 44... fxe5, then 45.f6 ♞xf6 46.♞xg4 followed by ♖e4

45 d6! c5

45... cxd6 46 c5! and 47.♖b3

46 ♖e4 ♞d7 47 ♞h6

47... ♖f7 48.♖d5+ ♖e8 49.♞xf6+- 1-0 (Alechine - Johner, 1934)

139. 16 ♖a6!±

16... ♖xa6 17 ♞xa6 ♜xc1 18 ♜xc1 ♞a8 19 ♖d6 ♜d8 20 e5! ♖g7  
21 ♜c7 ♞e4 22 ♖d2! ♞e1+ 23 ♖f1 ♖f8

23... ♖b8 24 ♞c8!

24 ♞xa7 ♖h6 25 ♜xf7 ♞b1 26 ♞e7 ♜c8 27 ♜xh7 ♖xh7 28  
♞xe6+ ♖g7 29 ♞d7+ ♖g8 30 ♞xc8+ ♖g7 31 ♞c7+ ♖g8 32 e6  
1-0 (Geller - Simagin, 1951)

140. White clearly has the upper hand, but the weakness on d5 is not enough to win the game. It needs to build up another attack targeted towards the kingside.

25 g4! ♞c6 26 g5 h×g5 27 ♞xg5 f6

Threaten 27. ♞h5 followed by 28. ♜h4

28 ♞g6 ♖f7 29 ♞g3 f5?!

Now Black’s dark squares are irremediably weakening and f5 vulnerability is more evident.

30 ♞g5 ♞e6 31 ♖h1 ♞e5 32 ♜g1 ♜f8 33 ♞h6 ♜b8 34 ♜h4 ♖f8 35  
♞h8+ ♖g8 36 ♜f4 ♜bb7 37 ♜g5 ♜f7 38 ♞h5 ♞a1+ 39 ♖g2 g6 40  
♞xg6 ♖h7 41 ♞d6+ ♜be7 42 ♞d8+ 1-0 (Botvinnik - Zagorjansky,  
1943)

141. 14... ♜ae8!

The purpose of this move is defending e6-Pawn and, consequently, the preparation of a thematic weakening with f7-f6.



**15 b4 cxd4 16 cxd4 f6! 17 exf6 ♖xf6 18 ♖h4 ♗e7 19 f3?** (19 g4!?) **19... ♗f5 20 ♙xf5 exf5 21 ♗g3 ♗d7 22 ♜d1 ♗e5! 23 a4 ♗c4** (De Firmian - Gingihashvili, 1984)

142. An unexpected Queen's maneuver rewards White a powerful attack.

**18 ♖a4! ♜fd8 19 ♖e4! g6 20 ♖g4 h5**

20... ♗h7 21 ♙xg6+! f×g6 22 ♖xe6 ♜f8 23 ♜d7+-

**21 ♖h3** threatening the dangerous g2-g4

**21... f5 22 ♙c4 ♜xd1+ 23 ♜xd1 ♗f7 24 e4!±** and White wins.  
(Petrosjan - Smyslov, 1961)

143. Black urgently needs to strengthen his Knight.

**20... h5!**

Worse 20... g6? 21 ♖h6 and 22. ♜h3

**21 ♜f1 ♖b4 22 ♗e2 ♖c4 23 c3 g6 24 ♜gf3 ♗g7 25 b3 ♖a6 26 ♗g3 h4! 27 ♗e4 ♗f5 28 ♖f4 ♖xa2!? 29 ♙c5**

29 g4 h×g3 30 h×g3 ♗g7 31 g4 ♜h8+ 32 ♗g1 ♜h4!

**29... ♖e2 30 ♜f2 ♖d3 31 ♜f3 ♖e2 32 ♜f2 ♖d3 33 ♜d2?! (33 ♜f3=) 33... ♖xd2! 34 ♗xd2 ♙xc5 35 ♗e4 ♙e3 36 ♗f6+ ♗g7 37 ♖c4 ♜dd8 38 ♗g4 ♙b6 39 ♗f2? ♙xf2 40 ♜xf2 ♗e3!—+ 0-1**  
(Suetin - Korčnoj, 1967)

144. **19... ♖e5!**

Preventing White from simplifying the position trading off the Bishops.

**20 ♖b2 (20 ♙e4) 20... ♖xb2 21 ♜xb2 a5 22 ♜bd2 ♗f8! 23 ♙c2 ♗e7 24 f3 a4** (Samisch - Alechine, 1926)

145. **14 ♙f1!**

A very good preventive move.

Worse 14 a4?! because of 14... c4! 15.b×c4 b4! 16.♗b1 ♗c5 trading the Pawn for an excellent counterplay.

**14... ♜e8 15 a4! b4**

15... c4?! 16 a×b5 a×b5 17 b×c4 b4 18 ♗b5±

**16 ♗b1 ♗b6 17 ♗bd2 ♜e7 18 ♙b2**

Better 18 a5!

**18... ♗e8 19 ♜c1 f6 20 a5! ♗a8 21 ♗c4±** (Polugaevsky - Biyiasas, 1973)

146. Unsuccessful 15... ♖c7? 16. ♙b1 ♜ad8 17. ♜d5!± as well as 15... ♖e7? 16. ♖f4! “firmly” nailing down the black Knight 16... ♜fd8 17. a3 ♜ac8 18. ♖h4 a5 19. h3 ♜c7 20. f4± (Petrosjan - Beliavsky, 1975)

Correct **15... ♜a7!** followed by ♜d7, ♖a8, for instance: **16 ♙b1 ♜d7 17 ♖f4 ♜h5! 18 ♙xd8 ♜xf4 19 ♙xb6? ♙xc3 20 ♜xc3 ♜e2+—**

147. **19... ♖a6! 20 ♖xa6**

20 ♜e2? ♜c2+—

20 ♜e1 ♖xd3+ 21 ♜xd3 ♜c2±

**20... bxa6 21 ♜g2 ♜c2±** (Paulsen - Tarrasch, 1888)

148. White wants to play 1. ♖d3 followed by b2–b3 and ♙b2 with upper hand.

Needs to be stopped by **1... a5! 2 ♖d3**

2 a4 ♜fd8 3 ♖d3 ♙a6 4 ♖d2 ♜ac8

**2... a4!** (variation of Hübner - Smyslov, 1982)

149. **18... ♙xc3! 19 bxc3 ♙f5! 20 ♙xf5 gx f5±**

Last two very good Black’s moves “killed” darked-squared White’s Bishop.

**21 ♜ae1 ♜f8 22 ♖d1** and now **22... ♜g6!**

22... h4?! (Salov - Marin, 1987)

**23 ♖xh5 ♖a5!** with excellent winning chances for Black.

150. Threatening 22. g3! fixing the weakness on f5 and freeing the white Rook. It has to be stopped by

**22... ♜h6! 23 h3 ♜e8 24 ♙d3 ♜f6 25 ♙c2 ♜h4!** (with the idea of trading off the weak Pawn by f5–f4) **26 ♜d6+ ♜e6 27 ♜d2 f4! 28 exf4 ♜xf4 29 ♙xh7 ♙e4! 30 ♙xe4 ♜exe4 31 ♜d7 ♜xf2 32 ♜gd1 1/2–1/2** (Geller - Spasskij, 1964)

151. **18 ♜b1!**

With the idea of ♜a3–c4.

**18... ♙d7 19 a5! ♜ab8**

19... ♙b5 20 ♙xb5 axb5 21 ♜a3±

**20 ♜a3 ♖d4 21 ♖c3 ♜fc8 22 ♜ac1 ♖xc3 23 bxc3 ♜f6 24 ♙f1!**

24 ♜c4? ♙b5 e... ♙xc4

**24... ♜c7 25 ♜c4±** (Chernin - Lobron, 1990)

152. Black has a better position.

He plans to shift the Knight by ♖e7–c6–a5, but 30... ♖e7?! is incorrect, because of 31. ♗e2! (31... ♗×b3 32. ♗b5 ).

Therefore, the precautionary right move is **30... a6! 31 g4**

31 ♖e2 ♙d2 32 ♖c3 ♗e1 33 ♖b1 ♙b4+

**31... ♖e7 32 ♖e2 ♙d2 33 ♖g1 ♖c6 34 ♙c7 ♖b4 35 ♙a5 ♖c2!  
36 ♙×d2 ♗×d2 37 ♙g3 ♖×e3! 38 ♗a3 ♖d1 39 ♖f3 ♗×f2+ 40  
♙f4 g5+ 0–1** (Skembris - Torre, 1982)

153. **19 h4!**

Blockading the loose advancement of the Pawn g6–g5 and setting up for the Knight's shift on d3.

**19... h6 20 ♖h3! a5 21 f3 a4 22 ♖he1!**

22 ♖f2?! g5!

**22... a3 23 ♖f2 a2 24 ♖d3 ♖a3 25 ♖a1+– 25... g5!? 26 h×g5  
h×g5 27 ♙×g5 ♙f7**

27... ♖b8 28 ♙c2

**28 ♙f4 ♖b8 29 ♖ec1 ♙c6 30 ♖c3 ♖a5 31 ♖c2 ♖ba8 32 ♖c1 1–0**  
(Karpov - Kasparov, 1986)

154. **22... b5!**

Getting central square d5.

**23 ♗f3!**

After 23 c5 ♖d5 followed by g7–g5 Black has a strong upper hand. Even tactical complications can not save White from facing these problems.

**23... b×c4 24 ♗×c6 ♗×f4 25 ♗×c4 e5! 26 ♗e2 exd4 27 ♖d3  
d×c3! the shortest route 28 ♖×d7 ♖×d7 29 ♖×d7**

If 29 ♗e8+ ♙h7 30 ♗×d7 then 30... ♗e4! 31. ♗×f7 (or 31. ♗d5 ♗×d5  
32. ♖×d5 c2 33. ♖c5 ♙d4+–+ ) 31... c2 32. ♗×h5+ ♙g8+–

**29... ♙d4+ 30 ♙h1**

30 ♖×d4 ♗×d4+ 31 ♙f1 ♗f4+ 32 ♙e1 ♗×b4+–

**30... ♗c1+ 0–1** (Kmoch - Alechine, 1927)

155. **17... ♙×c3! 18 b×c3 ♖e5 19 ♙e2 ♗d7 20 ♙h2 ♗f5 21 f4 ♗e4! 22  
♖ae1 ♖×c4 23 ♙×c4 ♗×c4 24 ♙f2 ♖f8+** (Lputian - Gufeld, 1983)

156. **25... ♖d4!**

Because of the threat 26. ♖a4! , that is really forced, although very strong.

## 26 ♖e2?!

Better was trading off the Rook with the Bishop 26 ♖xd4 cxd4 27 ♖e2 followed by ♖c1-d3.

**26... ♖c8 27 ♖xd4 cxd4 28 ♖f2 c5 29 ♖f1 f5 30 ♖g3 ♖d7 31 ♖ad1 f4 32 ♖f2 g5** (Liublinsky - Botvinnik, 1943)

## 157. 29 ♖b1!

With the idea b2-b4.

## 29... b6

29... a5 30 c3!± (30.a3?! ♖f8! 31.b4 cxb4 32.axb4 a4 )

## 30 b4 cxb4 31 ♖xb4

Threatening 32. ♖b5

**31... a6 32 ♖c4 ♖f8 33 ♖c6 ♖e7 34 d4 exd4+ 35 ♖xd4 e5 36 ♖f5+ ♖d8 37 g6! hxg6 38 ♖xg6+-** (Spielmann - Tarrasch, 1927)

## 158. 11 ♖f4! d6

11... ♖xf4 12 gxf4± followed by h4-h5.

**12 ♖d2 ♖f6 13 h5 ♖e6 14 hxg6 hxg6 15 O-O-O ♖a6 16 ♖h6 ♖g7 17 ♖g5 ♖f7 18 f4 ♖f6 19 ♖dh1 ♖h8 20 ♖xh8 ♖xh8 21 ♖xh8 ♖xh8 22 ♖xf6+ ♖xf6 23 ♖xd6± 23... ♖g8 24 e4! ♖f7 25 ♖h3! ♖h8 26 exf5 gxf5 27 ♖e4! ♖xa2 28 ♖g5+ ♖g7 29 ♖d7+ 1-0** (Nikolaev - Titova, 1995)

## 159. 27 b3!

♖d4 is not under threat any more and the aggressive move 28. ♖d3! can not be played.

## 27... ♖xa3 28 ♖d3!

Threatens opening the g-file with a checkmate attack.

**28... ♖b4?! 29 ♖f2 ♖c3 30 ♖xc3 ♖xc3 31 gxf5 ♖xb3 32 fxg6+ ♖g7 33 gxf7+ ♖xf7 34 ♖g6+ ♖g8 35 ♖e8+!**

**35... ♖g3 36. ♖xg3+ hxg3 37. ♖xg3+ ♖h8 38. ♖h4+ ♖g7 39. ♖g1# 1-0** (Gufeld - Romanishin, 1981)

## 160. 19 ♖f2!

Clearing a spot for the Knight which will shift to the blockade's square d4.

**19... ♖e7 20 ♖e2 O-O 21 ♖d4±** (followed by f4-f5) (Sveshnikov - Razuvaev, 1988)

161. **25 ♖g2!**

The reorganisation before a decisive attack.

**25... b3!**

25... ♗f4 26 ♘g5 ♖af6 27 f3!±

**26 axb3 a4 27 ♘h4 axb3**

27... g5 28 ♖f3!

**28 ♖xg6!**

But not 28 cxb3? ♗c6! 29 ♖xg6 ♖a1+! 30 ♘xa1 ♗c1+ 31 ♘a2 ♖a8+—

**28... ♖fa8!**

28... ♗xf2? 29 ♖xg7+!

**29 cxb3! ♗f7 30 ♖xg7+! ♘xg7 31 ♘f5+ ♘g8 32 ♗g4+ ♖g6 33 ♘e7+! ♘g7**

33... ♗xe7 34 ♗xg6+ ♗g7 35 ♗e6+ ♗f7 36 ♖h8++—

**34 ♘xg6 ♗xb3 35 ♘xe5 ♘f6 36 ♗g6+ ♘e5 37 d4 1–0** (Gufeld - Tal', 1959)

162. Black's position seems to be in danger because of the suspended h5-Pawn and e3–e4 threatens a Pawn attack towards the center. Severe actions are needed.

**27... ♖xe3! 28 ♘xe3 ♖xe3 29 ♘xh5 ♘xh5 30 ♗xh5 ♘c6 31 ♗g5**

If 31 ♖c1 then 31... ♗a5! (dangerous 31... ♖xc3? 32. ♘h7+ ♘xh7 33. ♖xc3 ♗xd4 34. ♖cc2 b4 35. ♖xb4 ♗d1+ 36. ♘h2 ♗xc2 37. ♖b8+ ♘f8 38. ♗e5 ) 32. ♗g5 ♖xc3 33. ♗d2 ♖a3 with nice play for Black.

**31... ♖xc3!**

A second sacrifice well aiming to get passed, united Pawns.

**32 ♗d2 ♖xc2! 33 ♖xc2 ♘e6 34 ♖d1 b4 35 ♖b2 b3+ and Black wins: 36 ♗c3 ♘c7 37 ♖e2 ♗a7 38 ♗b4 ♘b5 39 ♖e7 ♗a3! 40 ♗e1 c3! 41 ♖e8+ ♘xe8 42 ♗xe8+ ♘h7 43 ♗xf7**

Losing 43 ♗xb5 as well

**43... ♗a8 44 ♖e1 ♘d6 45 ♗c7 c2 46 ♗xd6 b2 47 ♗f4 ♗c6 0–1** (Lilienthal - Ragozin, 1935)

163. **36... ♘d8!**

Moving the Bishop on the b8-h2 diagonal. Since the c6-Bishop is out of play, Black's attack towards dark squares, strengthen by the opposite color Bishop, will rapidly decide the outcome of the game.

**37 bxc5 bxc5 38 ♖b1 ♘c7 39 ♘a4 e4! 40 dxe4 fxe4 41 ♖xf7+ ♖xf7 42 ♘d1 e3! 43 ♘f3 h4!—+ (Spasskij - Simagin, 1961)**

164. **1... b5!**

Strengthening the position of the Knight on c4, Black can look ahead without any immediate threats.

**2 ♖d7 ♗c8 3 ♜xe7**

Or 3 e6 ♗xd7 4 exd7 ♜xe1+ 5 ♘xe1 ♜xe1+ 6 ♗f1 ♖d8

**3... ♗xg4 4 ♜xa7 ♗xf3 5 ♗xf3 ♘xe5=** (Lerner - Lukin, 1977)

165. **17 ♘f5!**

This unexpected attack gives White the upper hand.

**17... ♘e5**

17... gxf5 18 ♜g3 ♘e5 19 ♗h6 ♘g6 20 ♗xg7 ♙xg7 21 exf5 b5 22 f×g6 h×g6 23 ♘e4±

**18 ♜g3 f6 19 ♘xg7 ♙xg7 20 ♜e3! ♘g4**

20... ♘xc4? 21 ♗h6+ ♙g8 22 ♜e2+-

**21 ♖d2 ♜f7 22 ♘a4 b6 23 b4 ♗d7 24 ♘b2 ♘e5 25 ♗xe5! dxe5 26 bxc5 bxc5 27 ♘d3±** (Portisch - Van Oosterom, 1956)

166. **20 ♜e3!**

The transition towards the end-game is the best way to highlight the failure of black pieces position.

**20... ♜xe3 21 fxe3 ♗g4 22 a5! ♘c8**

22... ♘bd7 23 h3 ♗xf3 24 gxf3 ♘c5 25 b4 ♘e6 26 ♗xe6 fxe6 27 ♘a4±

**23 ♜c1 ♗xf3 24 gxf3 ♘e7 25 ♘d5 ♘c6 26 ♘xf6+ gxf6 27 ♖d7 ♜ab8 28 ♙f2±** (Botvinnik - Sorokin, 1931)

167. **26 ♜b1! b6 27 ♜e4!**

The centralisation principle!

**27... ♜c3 28 ♙g2 ♜c7 29 ♗d3 h6 30 ♜h7+ ♙f8 31 ♜f5+ ♗f6 32 ♗f4 1-0** (Nikolaev - Borisenko, 1989)

168. **32... ♗c3! 33 ♗xb5**

It's losing 33 bxc3 dxc3 (threatening 34. ♖d3 ) 34. ♗c2 ♜e2 35. ♜c1 ♖d5! followed by ♖dd2.

**33... ♗xb2 34 ♗xa4 ♜xa3 35 ♗b3 ♗c1 36 ♜b7 ♗e3+ 37 ♙h1 d5 38 g3 h5 39 ♙g2 ♙h6 40 ♜b6 ♜aa5 41 ♙f3 ♜c3 42 ♙e2 ♜a3 43 ♜b1 ♜axb3! 44 ♖6xb3 ♜c2+ 45 ♙f1 ♜xh2 46 ♖d1 h4 47 g×h4 ♙h5 48 f5 ♙g4**

Black is about to checkmate (49... ♙f3 ), therefore White resigns. 0-1 (Forintos - Vasiukov, 1961)

169. Part of White's plan is the shifting the Rook on the kingside's third rank.

**21 ♖h4! ♜d7 22 ♗xe7!** getting rid of King's defender.

Worse 22 ♜e3?! ♘g6!

**22... ♜xe7 23 ♜e3 ♜ed8 24 ♜g3 ♘h8 25 ♜f4!**

threatening 26. ♘f6 e 27. ♜xh6!

**25... ♘d7 26 ♗a4! ♘xe5!? 27 ♜xe5 ♜c7 28 ♜e3 e5 29 ♘f3 e4 30 ♜d4! exf3 31 ♜xg7 ♜c5 32 ♜g4 ♜d6 33 ♜g8+ ♘h7 34 ♗c2+ 1-0** (Gufeld - Spasskij, 1960)

170. If only White could play 35. ♗f4 , everything would be OK. But...

**34... f4!**

Opening the path for the white King and starting the attack against the light dark squares.

**35 ♗xf4 g5! 36 h×g6 ♜xf4+! 37 ♘xf4 ♜f6+ 38 ♘g3 ♜xg6+ 39 ♘f3 ♗g4+ 40 ♘g3 ♗e2+ 41 ♘h4 ♜b7 42 ♜xe2 ♜e7+ 0-1** (Yakubovich - Simagin, 1936)

171. **22 b4!**

This gives White a chance of exploiting d6's weakness.

**22... cxb4 23 ♗xb4 ♗f8 24 ♘e3 ♘f6 25 c4 ♜e8 26 ♘c2 ♜xe1+ 27 ♘e1 ♜e8 28 ♘f1± 1-0** (Stein - Ljubojević, 1971)

172. **16... b5!**

Strengthening the Queen's position and counter-attacking opponent's central pawn structure, Black fights to get the initiative.

**17 ♜h4 ♜b6 18 e5 ♘xe5 19 fxe6 ♘xd3 20 ♜xd3**

20 exd7 ♜c6

**20... ♜xe6 21 ♜xh7+ ♘f7 22 ♗h6 ♜h8 23 ♜xh8 ♜c2 24 ♜c1?**

Firmer 24 d5

**24... ♜xg2+ 25 ♘f1 ♜b3 26 ♘e1 ♜f3 0-1** (Geller - Euwe, 1953)

173. **17... ♘b8!**

Knight goes on e4.

**18 ♘d2 ♘d7 19 ♗f3 ♘f6 20 ♜d3 ♘e4! 21 ♜e2**

21 ♗xe4? fxe4 22 ♘xe4 ♗xh2+ 23 ♘xh2 ♜h4+±

**21... ♘g5 22 ♗xd5 exd5 23 ♘f3 ♘e4 24 ♜ac1 c6 25 ♗e1 ♜ae8 26 g3 ♜d7 27 ♜f1 g5!±** and Black has a slight advantage with the minority attack on the kingside. (Feigin - Flohr, 1937)

174. 14... ♖e7!

Black's plan: f7-f6, ♖d8, ♙d7-e8-h5, ♜c6.

15 ♖hc1 f6 16 ♖c5

16 ♖c7? ♙c6

16... ♖d8 17 ♙d3 ♖c8! 18 ♖ac1 ♖xc5 19 ♖xc5 ♙e8 20 ♜e1 ♜c6  
21 exf6 gxf6± (Sieiro - Gurevič, 1985)

175. 14 e6! fxe6 15 ♙xg7 ♖xg7 16 d4± 16... ♖f8 17 ♖e1 ♖f6 18 ♜bd2  
♗f8 19 ♖e3 ♜g5 20 ♜xg5 hxg5 21 ♜f3 ♗h8 22 ♜xg5 ♜f8 23  
cxd5! cxd5 24 ♗c5 ♖h6 25 ♖e5 ♜d7 26 ♗c1 ♖g7 27 ♜xe6+  
♖g8 28 ♖e2 ♜b6 29 ♜c7 ♖c6 30 ♗f4 e5 31 ♖xe5 1-0 (Nikolaev -  
Struk, 1996)

176. Correct 18... f6!

Not 18... f5? 19 e5 d5? 20 ♜a4 ♗e7 21 ♗d4 ♖fb8 22 ♜c5 a5 23 a3±  
(Lasker - Cohn, 1909)

177. 25 ♜a5!

With the idea of ♜a5-c4-e3-d5.

25... ♖c8 26 ♜c4 ♗c6 27 ♜e3 a5 28 ♖c4 ♗a6 29 b3 ♙b6 30  
♖xc8+ ♗xc8 31 ♜ed5 ♜xd5 32 ♜xd5± (Geller - Najdorf, 1953)

178. 15... g5!

Getting control of the central e5 square.

16 ♜f1?!

Wrong 16 fxg5 ♜e5 17 ♖f1 ♜xd3 18 ♗c2 ♜e5±

It's worth drawing attention to the material sacrifice 16 fxg5 ♜e5 17  
♗d1!? even though after 17... ♗e7! 18. ♗e2 ♜xf3+ 19. ♗xf3 ♙e5 Black  
has more options.

16... gxh4 17 ♙xf4 ♜e5 18 ♖g3 ♙f6 19 ♗d2 ♗e7 and after queen-  
side castling, Black can attack the opponent's King, and wins. (Thomas  
- Boleslavsky, 1947)

179. 14... ♖d7!

Instantly demobilising the King on the queenside.

15 ♙d2 ♜c6 16 ♗g7+ ♖c8 17 ♖e2 ♖b7 18 ♖hc1 ♗e8 19 ♖c2  
♙d8 20 a4 ♖f8 21 b4 ♖f7± (Matveyeva - Litinskaya, 1985)



180. **9 g4!**

Without the fear of the following **9...** ♖h4+ **10** ♘d2 ♜f6 **11** ♖e1 ♖xe1+ **12** ♙xe1 h6 **13** ♜g3 b6 **14** ♙f4 e5 **15** ♙e3± (Azmaiparashvili - Arnason, 1990)

181. **13 h4!** ♖ab8 **14** ♖h3! c5 **15** ♖g5! cxd4 **16** ♖xf6 ♜xf6 **17** ♖xd4 ♖b7 **18** ♖b3! ♖xb3 **19** axb3± (Spasskij - Petrosjan, 1966)

182. **23 ♖c1!**

With the idea of fortifying light-squared Bishop's position with the manoeuvre ♙f3-d1-b3.

**23...** ♖c4 **24** ♙d1 ♖xc1 **25** ♖xc1 ♖fc8 **26** ♙b3+± (Kramnik - Gelfand, 1997)

183. **19 ♖c1! a6 20 ♖xc8 ♖xc8 21 ♖c1 ♖xc1+ 22 ♖xc1 ♖d8 23 h6!**

After Rooks are exchanged, last rank weakness has a negative impact on Black's army.

**23...** ♖c8 **24** ♖f4 ♖d8 **25** ♜e5 b5 **26** ♙c3 ♜c4 **27** ♙xc4 bxc4 **28** ♙a5! ♖e7 **29** ♜d7! 1-0 (Portisch - Christiansen, 1982)

184. **20...g5! 21 ♜d3**

21 ♜g2? g4-+

**21...** ♙xd3 **22** exd3 ♖a6 **23** ♖d2 h6+ (Lutz - Bologan, 1994)

185. **18...c5! 19 O-O-O ♜d4+** (Kramnik - Leko, 1998)

186. **36 ♜g4! ♖f8 37 h5 gxh5 38 ♜e3+- 38...d6 39 ♜f5+ ♙g6 40 ♖c3 ♜a6 41 ♖c6 ♜c5 42 f3 ♜d3 43 ♖c7 b5 44 ♖xa7** 1-0 (Lilienthal - Keres, 1941)

187. **42...g5! 43 ♖a2**

43 fxg5 ♜e5!-+

**43...** gx f4 **44** ♖e2 ♖g6 **45** ♖c2 ♙h7 **46** ♖c3 ♖g8 **47** ♙h1 ♖h5 **48** ♖d2 fxg3 **49.** ♙xg3 ♖xg3 **50.** ♖c6 ♜e5 **51.** ♖e4+ ♙g8 **52.** ♖df2 ♖g5 **53.** ♖c2 ♖d1 0-1 (Tartakower - Lasker, 1909)

188. **16 ♙h4!**

Bishops exchange triggers white Rook's attack and weakens Black's dark squares.

**16...** ♙xh4

16... ♖c7? **17** ♙xe7 ♖xe7 **18** ♙xh7++-

**17** ♖xh4 ♙b7 **18** ♖g4 g6 **19** ♖g5 ♖d7 **20** ♖h1± (Kupreichik - Taimanov, 1976)

189. **16...h5!**

Prophylaxis against f4-f5.

**17 ♖g1**

17 f5 h4 18 f6 ♖g8 19 ♖h1 ♜e8 followed by ♜e6 and the f6-Pawn is gone.

**17...h4 18 ♖3e2 ♖f5 19 ♖f3 f6 20 ♖h2?! ♜de8 21 ♜d2 ♜e6 22 ♖g4 ♜he8 23 ♜de1 ♜8e7! 24 ♖d1 ♜e8! 25 ♜f3 ♖a5 26 b3**

26 ♜xd5? ♜xe2! 27 ♜xe2 ♜xe2 28 ♜xa5 ♖g3 29 ♜f3 ♜e4+-

**26...♖c4 27.bxc4 ♜a4+-+ (Winter - Alechine, 1936)**

190. **16...c5!**

With the aim of enhancing the Bishop along the big diagonal.

**17 h3 ♜g6 18 ♖h2 O-O-O 19 h4 ♜c6 20 ♖f3 ♜b7!** (with the idea of ♜e8-c6) **21 ♜d2 d4 22 ♖e1 ♜e8 23 ♖d3 ♜c6+** (Gunsberg - Čigorin, 1890)

191. **10 c5!** Fixing the weakness of dark squares and threatening the manoeuvre ♖b1-a3-c4-d6.

**10...♜xb2 11 ♖d2 O-O**

11...♜xa1? 12 ♜xa1 O-O 13 ♜f6!+- ; 11...♜g7!?

and now **12 ♜h6!** (played in the game was 12 ♜b1!?) **12...♜g7 13 ♜xg7 ♖xg7 14 ♖c4** gives White a decisive advantage. (Topalov - Polgar, 1994)

192. **15...f5! 16 ♜h5**

16 f3 ♖xg3 17 hxc3 ♜d6+

**16...♜f8 17 h3 ♖xg3 18 fxc3 ♜d6+** (Onischuk - Kramnik, 1997)

193. **11...c4!**

A manoeuvre to limit White's light-squared Bishop.

**12 f4 g6 13 ♖b1 h5 14 ♜h4 ♜e7! 15 ♜g5? ♜xg5 16 fxc5 ♖xe5 17 ♜e3 O-O 18 ♜e2 ♖c6 19 f4 ♖e7+-** (Yates - Capablanca, 1925)

194. **24 ♜xf6! gxf6 25 ♜xf6±**

A "draught" along the a1-g8 diagonal makes Black's defence laborious.

**25...♜h5 26 ♜e3 h6 27 h3 ♜f5 28 ♜c3 ♖h7 29 g4! ♜g5 30 f4 ♜h4 31 ♖g2 ♜g8 32 ♜e7! ♜xe7 33 ♜xe7+-** (Smyslov - Trifunovic, 1955)

195. **20 b4! ♖axf5**

After 20... ♖a4 White could have played on the kingside 21. f4!

**21 a4 ♜f6 22 a5!**

But now the passed Pawn is deciding the outcome of the game.

**22... bxa5 23 bxa5± 23... ♖c5 24 ♖a4 ♖a8 25 a6 ♖f5 26 ♖fe1 ♜f8 27 c4! ♜d7 28 ♖b4 ♜b6 29 ♕xd6+! cxd6 30 ♖xb6 1-0**  
(Smyslov - Dueckstein, 1955)

196. **14... ♜b8!**

Rearrangement of pieces with the aim of strengthening light-squared Bishop.

Much worse 14... ♜b4? because of 15. ♜d6! cxd6 16. ♖xb4

**15 ♕e2 ♕c6! 16 ♜f6 ♜d7! 17 ♜h5 ♕xf3! 18 ♕xf3 ♕xe5 19 ♖e4 c6 20 ♖xd7 ♕xb2+! 21 ♜xb2 ♖xd7+** (Adams - Karpov, 1994)

197. **11... dxc3 12 bxc3 b4!**

Getting control of central d4.

**13 ♜c4 ♕g4 14 ♕b2 ♕c5 15 ♖ad1 bxc3 16 ♕xc3 ♜d4 17 ♕xd4 ♕xd4+** (Spasskij - Taimanov, 1956)

198. **12 e5! fxe5 13 f5! ♕f7 14 ♜e4**

With a pawn sacrifice White takes control of the important e4 square.

**14... O-O-O 15 ♖g4 ♜b8 16 ♖xg7** with upper hand. (Botvinnik - Pomar-Salamanca, 1962)

199. **20... ♜d8!**

After 20... O-O Black's King is under attack.

**21 ♖e2 ♕a3 22 ♖c2 ♜b4 23 ♖xc8+ ♜xc8 24 ♕c1**

**24... ♜xd3 25. ♖xd3 ♕e7=** (Anand - Timman, 1991)

200. **16 ♕d1!**

With the idea of ♜d4, ♕f3.

Worse 16 ♖xc8? ♖axc8 17 ♖xd7 ♖fd8-+

**16... ♜c5 17 b4! ♜e4 18 ♖d4 ♕b7 19 O-O b5 20 ♜e5 ♖h6 21 ♜c6 ♕xc6 22 ♖xc6 ♜f6 23 ♕f3 ♖ad8 24 ♖d6 ♖xd6 25 ♖xd6±**  
(Alechine - Vidmar, 1935)

Maurizio Camangi, software engineer, chess enthusiast, author of “[Guida ai server FICS](#)” (in Italian) and Olga Strelnikova, Russian mother-tongue, software engineer and beginner of the *Nobil Giuoco*, have already translated the original booklet from Russian to Italian with the aim of popularising this work which is focused on testing your own analysis abilities and strategic evaluation, thanks to 200 positions accurately selected by Leonid Nikolaev.

Leonid Nikolaev is the original author of this booklet in Russian and an important representative of the everlasting “soviet” chess school. Leonid set about developing a training program which would target the evaluation of strategic patterns and this booklet is his first work, followed by other interesting publications (in Russian).

We all hope that these translations will raise the interest in chess and the feedback from both Italian and English readers will support us on maintaining our [website](#) and boost new publications.

Leonid Nikolaev is available on [Chess.com](#).